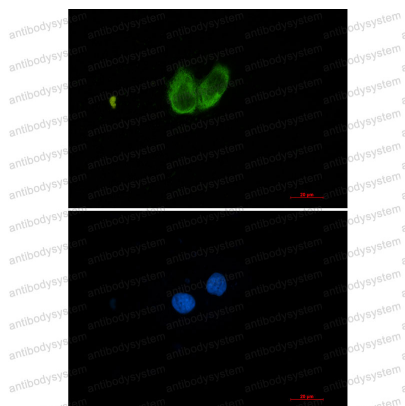


Anti-ZYX Antibody (R2G80)

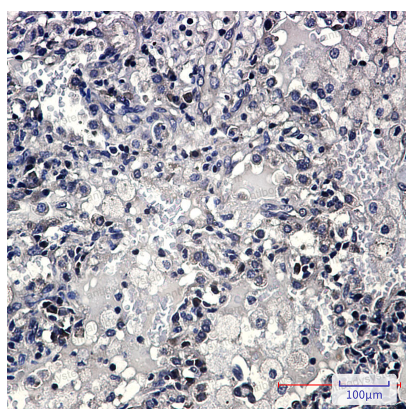
Summary

| | |
|------------------------------|---|
| Catalog No. | RHH23801 |
| Clone ID | R2G80 |
| Host species | Rabbit |
| Tested applications | IF: 1:50-1:200, IHC: 1:50-1:100, IP: 1:20, WB: 1:500-1:1000 |
| Species reactivity | Human, Rat |
| Form | Liquid |
| Storage buffer | 0.01M PBS, pH 7.4, 0.05% BSA, 50% Glycerol, 0.05% Sodium azide. |
| Concentration | 1 mg/ml |
| Purity | >95% by SDS-PAGE. |
| Clonality | Monoclonal |
| Isotype | IgG |
| Applications | IF, IHC, IP, WB |
| Target | Zyxin-2, ZYX, Zyxin |
| Purification | Protein A/G purified from cell culture supernatant. |
| Endotoxin level | Please contact with the lab for this information. |
| Accession | Q15942 |
| Stability and Storage | Use a manual defrost freezer and avoid repeated freeze thaw cycles. Store at 4 °C for frequent use. Store at -20 °C for twelve months from the date of receipt. |
| Note | For research use only. |

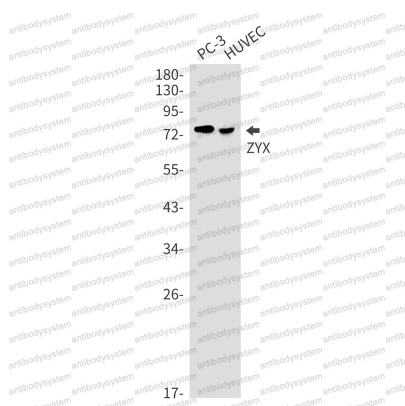
Data Image



Immunofluorescence



Immunohistochemical



Western blot

Immunocytochemistry analysis of ZYX (green) in Hela using ZYX antibody, and DAPI (blue).

Immunohistochemistry analysis of paraffin-embedded Human lung cancer using Zyxin antibody. High-pressure and temperature Sodium Citrate pH 6.0 was used for antigen retrieval.

Western blot analysis of ZYX in PC-3, HUVEC lysates using ZYX antibody.



Western blot

Western blot analysis of ZYX in C6, rat Brain lysates using ZYX antibody