

Anti-SMAD2 Antibody (R2G69)

Summary

Catalog No.	RHH20008
Clone ID	R2G69
Host species	Rabbit
Tested applications	IF: 1:50-1:200, IHC: 1:50-1:100, IP: 1:20, WB: 1:500-1:1000
Species reactivity	Human, Rat, Hamster
Form	Liquid
Storage buffer	0.01M PBS, pH 7.4, 0.05% BSA, 50% Glycerol, 0.05% Sodium azide.
Concentration	1 mg/ml
Purity	>95% by SDS-PAGE.
Clonality	Monoclonal
Isotype	IgG
Applications	IF, IHC, IP, WB
Target	Mothers against decapentaplegic homolog 2, SMAD 2, SMAD2, JV18-1, Mad-related protein 2, hMAD-2, MADR2, Mothers against DPP homolog 2, SMAD family member 2, MADH2, Smad2, hSMAD2, MAD homolog 2
Purification	Protein A/G purified from cell culture supernatant.
Endotoxin level	Please contact with the lab for this information.
Accession	Q15796

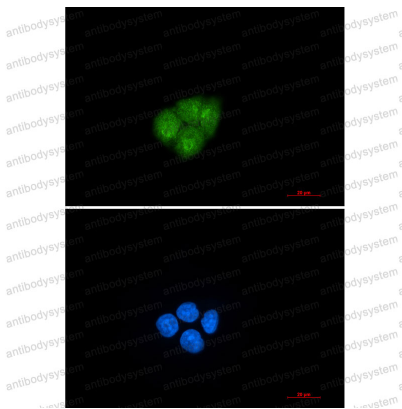
Stability and Storage

Use a manual defrost freezer and avoid repeated freeze thaw cycles. Store at 4 °C for frequent use. Store at -20 °C for twelve months from the date of receipt.

Note

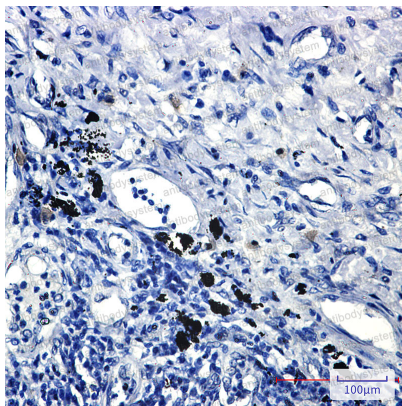
For research use only.

Data Image



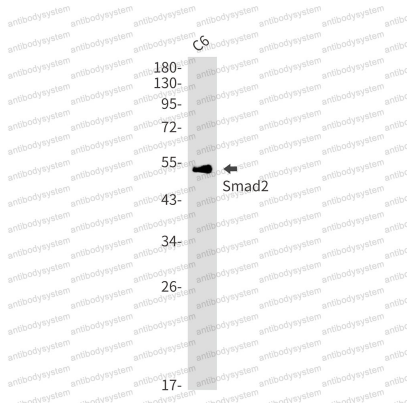
Immunofluorescence

Immunocytochemistry analysis of Smad2 (green) in Hela using Smad2 antibody, and DAPI (blue).



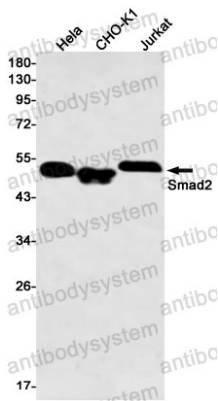
Immunohistochemical

Immunohistochemistry analysis of paraffin-embedded Human lung cancer using Smad2 antibody. High-pressure and temperature Sodium Citrate pH 6.0 was used for antigen retrieval.



Western blot

Western blot analysis of Smad2 in C6 lysates using Smad2 antibody.



Western blot

Western blot analysis of Smad2 in HeLa, CHO-K1, Jurkat lysates using Smad2 antibody