

# Anti-LTB4R Antibody (R2G53)

## Summary

---

<b>Catalog No.</b>	RHH17401
<b>Clone ID</b>	R2G53
<b>Host species</b>	Rabbit
<b>Tested applications</b>	IHC: 1:100-1:200, WB: 1:1000-1:2000
<b>Species reactivity</b>	Human
<b>Form</b>	Liquid
<b>Storage buffer</b>	0.01M PBS, pH 7.4, 0.05% BSA, 50% Glycerol, 0.05% Sodium azide.
<b>Concentration</b>	1 mg/ml
<b>Purity</b>	>95% by SDS-PAGE.
<b>Clonality</b>	Monoclonal
<b>Isotype</b>	IgG
<b>Applications</b>	IHC, WB
<b>Target</b>	P2RY7, LTBR, G-protein coupled receptor 16, CMKRL1, P2Y7, Chemoattractant receptor-like 1, Leukotriene B4 receptor 1, LTBR-1, LTBR-R1, BLT, GPR16, BLTR, P2Y purinoceptor 7, BLT1
<b>Purification</b>	Protein A/G purified from cell culture supernatant.
<b>Endotoxin level</b>	Please contact with the lab for this information.
<b>Accession</b>	Q15722

**Stability and Storage**

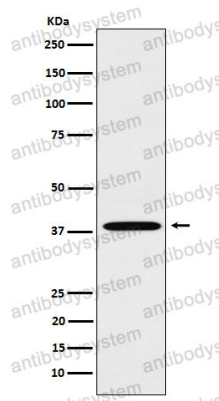
Use a manual defrost freezer and avoid repeated freeze thaw cycles. Store at 4 °C for frequent use. Store at -20 °C for twelve months from the date of receipt.

**Note**

For research use only.

**Data Image**

---



Western blot

Western blot analysis of LTB4R expression in A549 cell lysate.