

Anti-TAF1C Antibody (R2G43)

Summary

Catalog No.	RHH13201
Clone ID	R2G43
Host species	Rabbit
Tested applications	IP: 1:20, WB: 1:500-1:1000
Species reactivity	Human
Form	Liquid
Storage buffer	0.01M PBS, pH 7.4, 0.05% BSA, 50% Glycerol, 0.05% Sodium azide.
Concentration	1 mg/ml
Purity	>95% by SDS-PAGE.
Clonality	Monoclonal
Isotype	IgG
Applications	IP, WB
Target	TAFI110, TATA box-binding protein-associated factor 1C, RNA polymerase I-specific TBP-associated factor 110 kDa, TBP-associated factor 1C, TATA box-binding protein-associated factor RNA polymerase I subunit C, Transcription initiation factor SL1/TIF-IB subunit C, TAF1C
Purification	Protein A/G purified from cell culture supernatant.
Endotoxin level	Please contact with the lab for this information.
Accession	Q15572

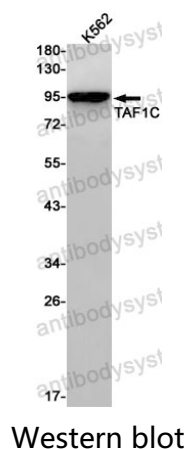
Stability and Storage

Use a manual defrost freezer and avoid repeated freeze thaw cycles. Store at 4 °C for frequent use. Store at -20 °C for twelve months from the date of receipt.

Note

For research use only.

Data Image



Western blot analysis of TAF1C in K562 lysates using TAF1C antibody.