

Anti-SHH Antibody (R2G41)

Summary

Catalog No.	RHH10701
Clone ID	R2G41
Host species	Rabbit
Tested applications	IF: 1:50-1:200, IHC: 1:50-1:100, WB: 1:500-1:1000
Species reactivity	Human, Mouse
Form	Liquid
Storage buffer	0.01M PBS, pH 7.4, 0.05% BSA, 50% Glycerol, 0.05% Sodium azide.
Concentration	1 mg/ml
Purity	>95% by SDS-PAGE.
Clonality	Monoclonal
Isotype	IgG
Applications	IF, IHC, WB
Target	ShhNC, Sonic hedgehog protein, Shh N-terminal processed signaling domains, SHH, Shh unprocessed N-terminal signaling and C-terminal autoprocessing domains, ShhN, ShhNp, HHG-1
Purification	Protein A/G purified from cell culture supernatant.
Endotoxin level	Please contact with the lab for this information.
Accession	Q15465

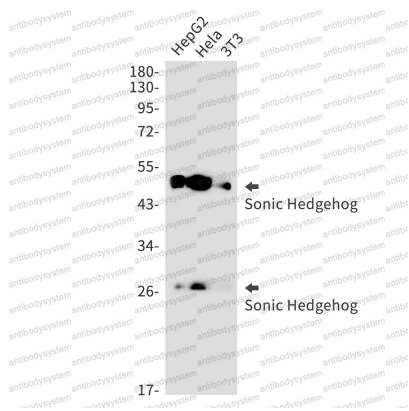
Recombinant Proteins & Antibodies

Stability and Storage

Use a manual defrost freezer and avoid repeated freeze thaw cycles. Store at 4 °C for frequent use. Store at -20 °C for twelve months from the date of receipt.

Note

For research use only.

Data Image

Western blot

Western blot analysis of Sonic Hedgehog in HepG2, Hela, 3T3 lysates using Sonic Hedgehog antibody.