

# Anti-SAFB Antibody (R2G39)

## Summary

---

<b>Catalog No.</b>	RHH09601
<b>Clone ID</b>	R2G39
<b>Host species</b>	Rabbit
<b>Tested applications</b>	IF: 1:50-1:200, IHC: 1:50-1:100, WB: 1:500-1:1000
<b>Species reactivity</b>	Human, Mouse
<b>Form</b>	Liquid
<b>Storage buffer</b>	0.01M PBS, pH 7.4, 0.05% BSA, 50% Glycerol, 0.05% Sodium azide.
<b>Concentration</b>	1 mg/ml
<b>Purity</b>	>95% by SDS-PAGE.
<b>Clonality</b>	Monoclonal
<b>Isotype</b>	IgG
<b>Applications</b>	IF, IHC, WB
<b>Target</b>	Scaffold attachment factor B1, HET, HSP27 ERE-TATA-binding protein, SAF-B, HSP27 estrogen response element-TATA box-binding protein, SAFB, SAF-B1, SAFB1, HAP
<b>Purification</b>	Protein A/G purified from cell culture supernatant.
<b>Endotoxin level</b>	Please contact with the lab for this information.
<b>Accession</b>	Q15424

**Stability and Storage**

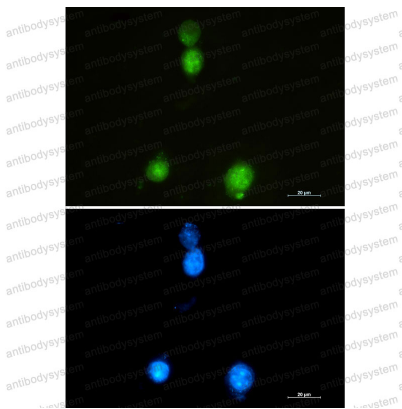
Use a manual defrost freezer and avoid repeated freeze thaw cycles. Store at 4 °C for frequent use. Store at -20 °C for twelve months from the date of receipt.

**Note**

For research use only.

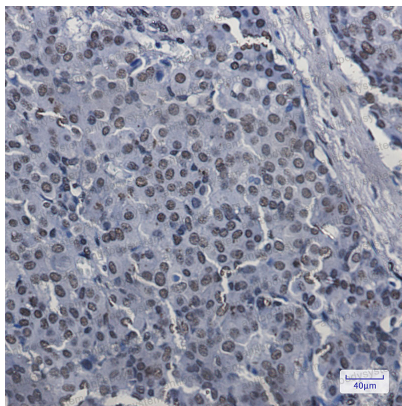
**Data Image**

---



Immunofluorescence

Immunocytochemistry analysis of SAFB1 (green) in 293 using SAFB1 antibody, and DAPI (blue).



Immunohistochemical

Immunohistochemistry analysis of paraffin-embedded Human breast cancer tissue using SAFB antibody. High-pressure and temperature Sodium Citrate pH 6.0 was used for antigen retrieval.



Western blot

Western blot analysis of SAFB in K562, 3T3, HeLa lysates using SAFB antibody.