

Anti-ERBB4/Her4 Antibody (R2G19)

Summary

Catalog No.	RHH06101
Clone ID	R2G19
Host species	Rabbit
Tested applications	WB: 1:500-1:1000
Species reactivity	Human, Rat
Form	Liquid
Storage buffer	0.01M PBS, pH 7.4, 0.05% BSA, 50% Glycerol, 0.05% Sodium azide.
Concentration	1 mg/ml
Purity	>95% by SDS-PAGE.
Clonality	Monoclonal
Isotype	IgG
Applications	WB
Target	HER4, Tyrosine kinase-type cell surface receptor HER4, p180erbB4, s80HER4, ERBB4, 4ICD, Receptor tyrosine-protein kinase erbB-4, Proto-oncogene-like protein c-ErbB-4, E4ICD
Purification	Protein A/G purified from cell culture supernatant.
Endotoxin level	Please contact with the lab for this information.
Accession	Q15303

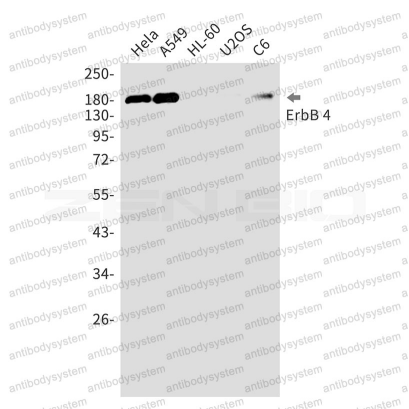
Recombinant Proteins & Antibodies

Stability and Storage

Use a manual defrost freezer and avoid repeated freeze thaw cycles. Store at 4 °C for frequent use. Store at -20 °C for twelve months from the date of receipt.

Note

For research use only.

Data Image

Western blot

Western blot analysis of ErbB 4 in HeLa, A549, HL-60, U2OS, C6 lysates using ErbB 4 antibody.