

Anti-Phospho-ERBB4/Her4 (Tyr1162) Antibody (R2G18)

Summary

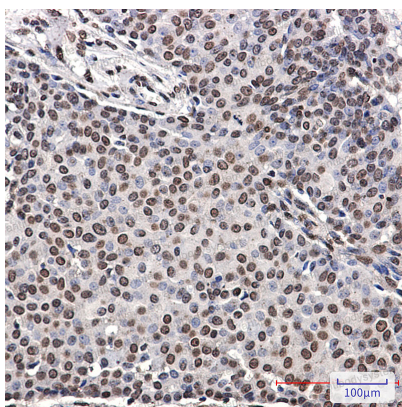
Catalog No.	RHH06102
Clone ID	R2G18
Host species	Rabbit
Tested applications	IHC: 1:50-1:100, IP: 1:20, WB: 1:500-1:1000
Species reactivity	Human
Form	Liquid
Storage buffer	0.01M PBS, pH 7.4, 0.05% BSA, 50% Glycerol, 0.05% Sodium azide.
Concentration	1 mg/ml
Purity	>95% by SDS-PAGE.
Clonality	Monoclonal
Isotype	IgG
Applications	IHC, IP, WB
Target	HER4, Tyrosine kinase-type cell surface receptor HER4, p180erbB4, s80HER4, ERBB4, 4ICD, Receptor tyrosine-protein kinase erbB-4, Proto-oncogene-like protein c-ErbB-4, E4ICD
Purification	Protein A/G purified from cell culture supernatant.
Endotoxin level	Please contact with the lab for this information.
Accession	Q15303

Stability and Storage

Use a manual defrost freezer and avoid repeated freeze thaw cycles. Store at 4 °C for frequent use. Store at -20 °C for twelve months from the date of receipt.

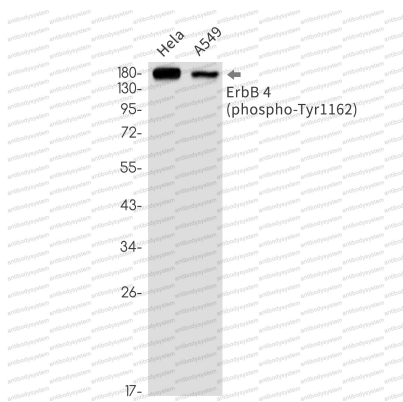
Note

For research use only.

Data Image

Immunohistochemical

Immunohistochemistry analysis of paraffin-embedded Human breast cancer using ErbB 4 (Phospho-Tyr1162) antibody. High-pressure and temperature Sodium Citrate pH 6.0 was used for antigen retrieval.



Western blot

Western blot analysis of Phospho-ErbB 4 (Tyr1162) in HeLa, A549 lysates using Phospho-ErbB 4 (Tyr1162) antibody.