

Anti-WRN Antibody (R2F25)

Summary

Catalog No.	RHG74704
Clone ID	R2F25
Host species	Rabbit
Tested applications	WB: 1:1000-1:2000
Species reactivity	Human
Form	Liquid
Storage buffer	0.01M PBS, pH 7.4, 0.05% BSA, 50% Glycerol, 0.05% Sodium azide.
Concentration	1 mg/ml
Purity	>95% by SDS-PAGE.
Clonality	Monoclonal
Isotype	IgG
Applications	WB
Target	RecQ protein-like 2, DNA helicase, RecQ-like type 3, RecQ3, Werner syndrome ATP-dependent helicase, RECQ3, RECQL2, Exonuclease WRN, WRN
Purification	Protein A/G purified from cell culture supernatant.
Endotoxin level	Please contact with the lab for this information.
Accession	Q14191

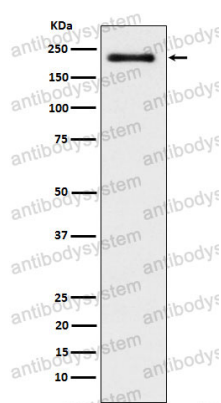
Stability and Storage

Use a manual defrost freezer and avoid repeated freeze thaw cycles. Store at 4 °C for frequent use. Store at -20 °C for twelve months from the date of receipt.

Note

For research use only.

Data Image



Western blot

Western blot analysis of WRN expression in K562 cell lysate.