

Anti-LRP8 Antibody (R2F17)

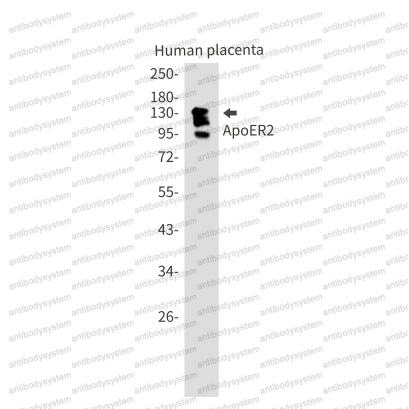
Summary

Catalog No.	RHG70602
Clone ID	R2F17
Host species	Rabbit
Tested applications	IP: 1:20, WB: 1:500-1:1000
Species reactivity	Human, Rat, Hamster
Form	Liquid
Storage buffer	0.01M PBS, pH 7.4, 0.05% BSA, 50% Glycerol, 0.05% Sodium azide.
Concentration	1 mg/ml
Purity	>95% by SDS-PAGE.
Clonality	Monoclonal
Isotype	IgG
Applications	IP, WB
Target	LRP8, LRP-8, Low-density lipoprotein receptor-related protein 8, APOER2, Apolipoprotein E receptor 2
Purification	Protein A/G purified from cell culture supernatant.
Endotoxin level	Please contact with the lab for this information.
Accession	Q14114
Stability and Storage	Use a manual defrost freezer and avoid repeated freeze thaw cycles. Store at 4 °C for frequent use. Store at -20 °C for twelve months from the date of receipt.

Note

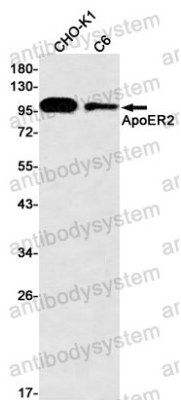
For research use only.

Data Image



Western blot

Western blot analysis of ApoER2 in Human placenta lysates using ApoER2 antibody.



Western blot

Western blot analysis of ApoER2 in CHO-K1, C6 lysates using ApoER2 antibody.