

Anti-RASGRF1 Antibody (R2F12)

Summary

Catalog No.	RHG68301
Clone ID	R2F12
Host species	Rabbit
Tested applications	WB: 1:500-1:1000
Species reactivity	Rat
Form	Liquid
Storage buffer	0.01M PBS, pH 7.4, 0.05% BSA, 50% Glycerol, 0.05% Sodium azide.
Concentration	1 mg/ml
Purity	>95% by SDS-PAGE.
Clonality	Monoclonal
Isotype	IgG
Applications	WB
Target	Ras-specific guanine nucleotide-releasing factor 1, Ras-GRF1, GNRP, RASGRF1, CDC25, Guanine nucleotide-releasing protein, Ras-specific nucleotide exchange factor CDC25, GRF1
Purification	Protein A/G purified from cell culture supernatant.
Endotoxin level	Please contact with the lab for this information.
Accession	Q13972

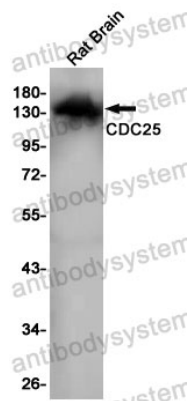
Stability and Storage

Use a manual defrost freezer and avoid repeated freeze thaw cycles. Store at 4 °C for frequent use. Store at -20 °C for twelve months from the date of receipt.

Note

For research use only.

Data Image



Western blot

Western blot analysis of CDC25 in rat Brain lysates using CDC25 antibody.