

Anti-EIF4EBP1 Antibody (R2E54)

Summary

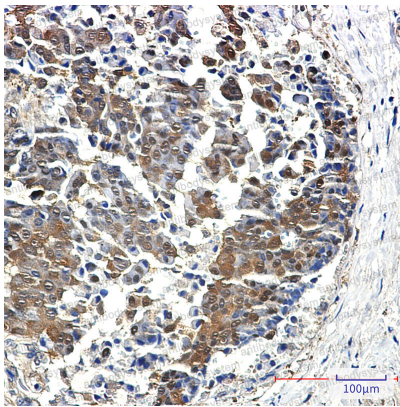
Catalog No.	RHG57901
Clone ID	R2E54
Host species	Rabbit
Tested applications	IHC: 1:50-1:100, IP: 1:20, WB: 1:500-1:1000
Species reactivity	Human, Mouse, Rat, Hamster
Form	Liquid
Storage buffer	0.01M PBS, pH 7.4, 0.05% BSA, 50% Glycerol, 0.05% Sodium azide.
Concentration	1 mg/ml
Purity	>95% by SDS-PAGE.
Clonality	Monoclonal
Isotype	IgG
Applications	IHC, IP, WB
Target	PHAS-I, eIF4E-binding protein 1, EIF4EBP1, Eukaryotic translation initiation factor 4E-binding protein 1, 4E-BP1, Phosphorylated heat- and acid-stable protein regulated by insulin 1
Purification	Protein A/G purified from cell culture supernatant.
Endotoxin level	Please contact with the lab for this information.
Accession	Q13541

Stability and Storage

Use a manual defrost freezer and avoid repeated freeze thaw cycles. Store at 4 °C for frequent use. Store at -20 °C for twelve months from the date of receipt.

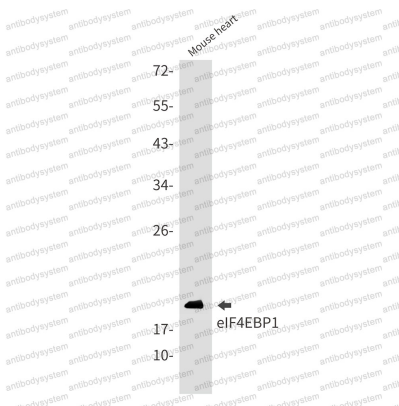
Note

For research use only.

Data Image

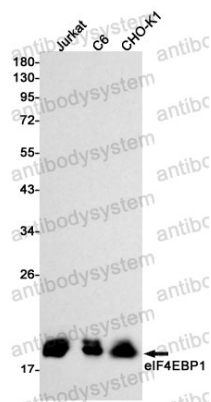
Immunohistochemical

Immunohistochemistry analysis of paraffin-embedded Human breast cancer using eIF4EBP1 antibody. High-pressure and temperature Sodium Citrate pH 6.0 was used for antigen retrieval.



Western blot

Western blot analysis of eIF4EBP1 in mouse heart lysates using 4E BP1 antibody.



Western blot

Western blot analysis of eIF4EBP1 in Jurkat, C6, CHO-K1 lysates using eIF4EBP1 antibody.