

Anti-Phospho-EIF4EBP1/2/3 (T46 + T46 + T32) Antibody (R2E52)

Summary

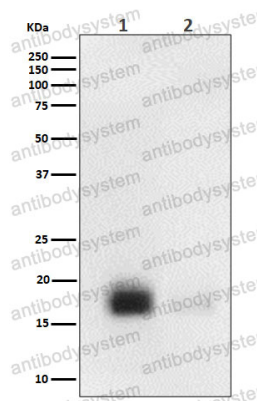
Catalog No.	RHG57903
Clone ID	R2E52
Host species	Rabbit
Tested applications	IHC: 1:100-1:200, WB: 1:1000-1:2000
Species reactivity	Human, Mouse
Form	Liquid
Storage buffer	0.01M PBS, pH 7.4, 0.05% BSA, 50% Glycerol, 0.05% Sodium azide.
Concentration	1 mg/ml
Purity	>95% by SDS-PAGE.
Clonality	Monoclonal
Isotype	IgG
Applications	IHC, WB
Target	PHAS-I, eIF4E-binding protein 1, EIF4EBP1, Eukaryotic translation initiation factor 4E-binding protein 1, 4E-BP1, Phosphorylated heat- and acid-stable protein regulated by insulin 1
Purification	Protein A/G purified from cell culture supernatant.
Endotoxin level	Please contact with the lab for this information.
Accession	Q13541, Q13542, O60516

Stability and Storage

Use a manual defrost freezer and avoid repeated freeze thaw cycles. Store at 4 °C for frequent use. Store at -20 °C for twelve months from the date of receipt.

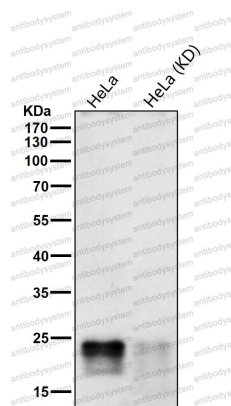
Note

For research use only.

Data Image

Western blot

Western blot analysis of Phospho-eIF4EBP1/2/3 (T46+T46+T32) expression in 293 treated with FBS+293.



Western blot

All lanes use the Antibody at 1:1K dilution for 1 hour at room temperature.