

Anti-ADAM15/MDC15 Antibody (R2E35)

Summary

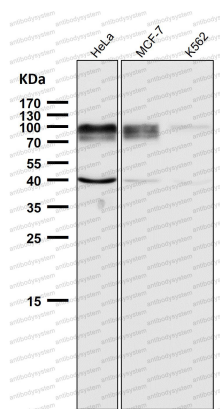
Catalog No.	RHG53602
Clone ID	R2E35
Host species	Rabbit
Tested applications	IHC: 1:100-1:200, WB: 1:1000-1:2000
Species reactivity	Human
Form	Liquid
Storage buffer	0.01M PBS, pH 7.4, 0.05% BSA, 50% Glycerol, 0.05% Sodium azide.
Concentration	1 mg/ml
Purity	>95% by SDS-PAGE.
Clonality	Monoclonal
Isotype	IgG
Applications	IHC, WB
Target	Disintegrin and metalloproteinase domain-containing protein 15, Metalloproteinase-like, disintegrin-like, and cysteine-rich protein 15, ADAM15, MDC15, Metalloprotease RGD disintegrin protein, Metargidin, MDC-15, ADAM 15
Purification	Protein A/G purified from cell culture supernatant.
Endotoxin level	Please contact with the lab for this information.
Accession	Q13444

Stability and Storage

Use a manual defrost freezer and avoid repeated freeze thaw cycles. Store at 4 °C for frequent use. Store at -20 °C for twelve months from the date of receipt.

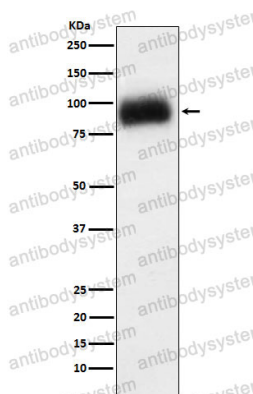
Note

For research use only.

Data Image

Western blot

All lanes use the Antibody at 1:2K dilution for 1 hour at room temperature.



Western blot

Western blot analysis of ADAM15 expression in SW480 cell lysate.