

Anti-SNTA1 Antibody (R2E32)

Summary

Catalog No.	RHG52302
Clone ID	R2E32
Host species	Rabbit
Tested applications	FCM: 1:20-1:100, IF: 1:50-1:200, IHC: 1:100-1:200, WB: 1:1000-1:2000
Species reactivity	Human, Mouse
Form	Liquid
Storage buffer	0.01M PBS, pH 7.4, 0.05% BSA, 50% Glycerol, 0.05% Sodium azide.
Concentration	1 mg/ml
Purity	>95% by SDS-PAGE.
Clonality	Monoclonal
Isotype	IgG
Applications	FCM, IF, IHC, WB
Target	TACIP1, Syntrophin-1, Pro-TGF-alpha cytoplasmic domain-interacting protein 1, SNT1, 59 kDa dystrophin-associated protein A1 acidic component 1, SNTA1, Alpha-1-syntrophin
Purification	Protein A/G purified from cell culture supernatant.
Endotoxin level	Please contact with the lab for this information.
Accession	Q13424

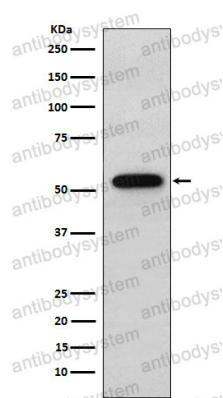
Stability and Storage

Use a manual defrost freezer and avoid repeated freeze thaw cycles. Store at 4 °C for frequent use. Store at -20 °C for twelve months from the date of receipt.

Note

For research use only.

Data Image



Western blot

Western blot analysis of Syntrophin alpha 1 expression in A549 cell lysate.