

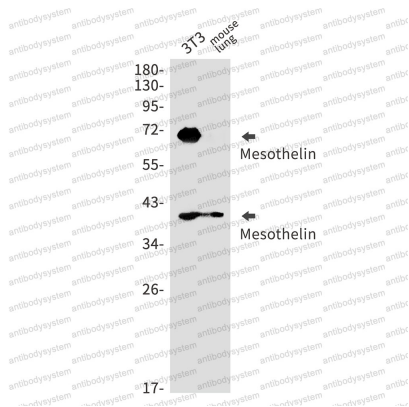
Anti-MSLN/Mesothelin Antibody (R2E30)

Summary

Catalog No.	RMG52001
Clone ID	R2E30
Host species	Rabbit
Tested applications	IP: 1:20, WB: 1:500-1:1000
Species reactivity	Mouse
Form	Liquid
Storage buffer	0.01M PBS, pH 7.4, 0.05% BSA, 50% Glycerol, 0.05% Sodium azide.
Concentration	1 mg/ml
Purity	>95% by SDS-PAGE.
Clonality	Monoclonal
Isotype	IgG
Applications	IP, WB
Target	CAK1 antigen, Mesothelin, MSLN, Pre-pro-megakaryocyte-potentiating factor, MPF
Purification	Protein A/G purified from cell culture supernatant.
Endotoxin level	Please contact with the lab for this information.
Accession	Q61468
Stability and Storage	Use a manual defrost freezer and avoid repeated freeze thaw cycles. Store at 4 °C for frequent use. Store at -20 °C for twelve months from the date of receipt.

Note For research use only.

Data Image



Western blot

Western blot analysis of Mesothelin in 3T3, mouse lung lysates using Mesothelin antibody.