

Anti-MAD2L1/MAD2 Antibody (R2E12)

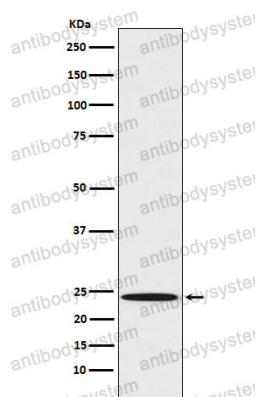
Summary

Catalog No.	RHG46202
Clone ID	R2E12
Host species	Rabbit
Tested applications	WB: 1:1000-1:2000
Species reactivity	Human
Form	Liquid
Storage buffer	0.01M PBS, pH 7.4, 0.05% BSA, 50% Glycerol, 0.05% Sodium azide.
Concentration	1 mg/ml
Purity	>95% by SDS-PAGE.
Clonality	Monoclonal
Isotype	IgG
Applications	WB
Target	MAD2L1, Mitotic arrest deficient 2-like protein 1, HsMAD2, MAD2-like protein 1, Mitotic spindle assembly checkpoint protein MAD2A, MAD2
Purification	Protein A/G purified from cell culture supernatant.
Endotoxin level	Please contact with the lab for this information.
Accession	Q13257
Stability and Storage	Use a manual defrost freezer and avoid repeated freeze thaw cycles. Store at 4 °C for frequent use. Store at -20 °C for twelve months from the date of receipt.

Note

For research use only.

Data Image



Western blot

Western blot analysis of Mad2L1 expression in A431 cell lysate.