

Anti-STK3 Antibody (R2E06)

Summary

Catalog No.	RHG43501
Clone ID	R2E06
Host species	Rabbit
Tested applications	IHC: 1:50-1:100, IP: 1:20, WB: 1:500-1:1000
Species reactivity	Human, Mouse, Rat, Hamster
Form	Liquid
Storage buffer	0.01M PBS, pH 7.4, 0.05% BSA, 50% Glycerol, 0.05% Sodium azide.
Concentration	1 mg/ml
Purity	>95% by SDS-PAGE.
Clonality	Monoclonal
Isotype	IgG
Applications	IHC, IP, WB
Target	STK3, MST2/N, MST-2, STE20-like kinase MST2, Mammalian STE20-like protein kinase 2, Serine/threonine-protein kinase Krs-1, Serine/threonine-protein kinase 3, KRS1, MST2, MST2/C
Purification	Protein A/G purified from cell culture supernatant.
Endotoxin level	Please contact with the lab for this information.
Accession	Q13188

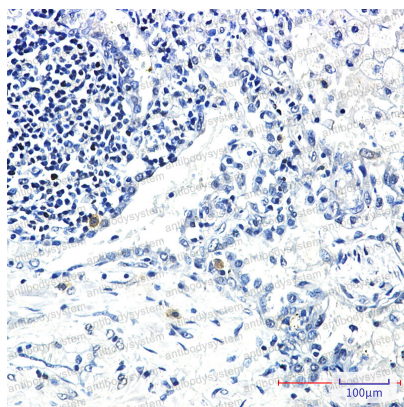
Recombinant Proteins & Antibodies

Stability and Storage

Use a manual defrost freezer and avoid repeated freeze thaw cycles. Store at 4 °C for frequent use. Store at -20 °C for twelve months from the date of receipt.

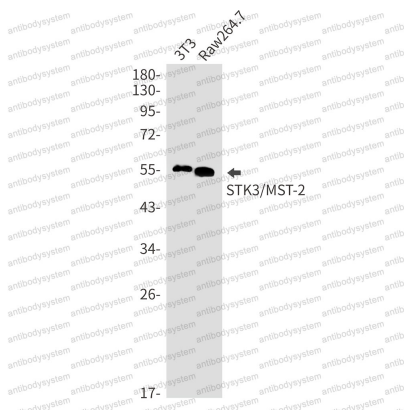
Note

For research use only.

Data Image

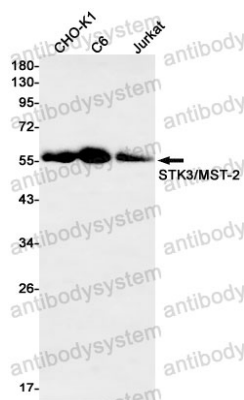
Immunohistochemical

Immunohistochemistry analysis of paraffin-embedded Human lung cancer using STK3 antibody. High-pressure and temperature Sodium Citrate pH 6.0 was used for antigen retrieval.



Western blot

Western blot analysis of STK3/MST2 in 3T3, Raw264.7 lysates using STK3 antibody.



Western blot

Western blot analysis of STK3/MST2 in CHO-K1, C6, Jurkat lysates using STK3/MST2 antibody.