

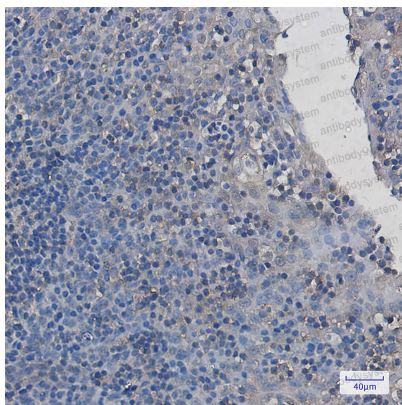
Anti-PAK2 Antibody (R2E02)

Summary

Catalog No.	RHG43201
Clone ID	R2E02
Host species	Rabbit
Tested applications	IHC: 1:50-1:100, WB: 1:500-1:1000
Species reactivity	Human, Mouse, Rat
Form	Liquid
Storage buffer	0.01M PBS, pH 7.4, 0.05% BSA, 50% Glycerol, 0.05% Sodium azide.
Concentration	1 mg/ml
Purity	>95% by SDS-PAGE.
Clonality	Monoclonal
Isotype	IgG
Applications	IHC, WB
Target	S6/H4 kinase, p21-activated kinase 2, p58, PAK-2, PAK2, C-t-PAK2, PAK65, p34, Gamma-PAK, Serine/threonine-protein kinase PAK 2, p27
Purification	Protein A/G purified from cell culture supernatant.
Endotoxin level	Please contact with the lab for this information.
Accession	Q13177
Stability and Storage	Use a manual defrost freezer and avoid repeated freeze thaw cycles. Store at 4 °C for frequent use. Store at -20 °C for twelve months from the date of receipt.

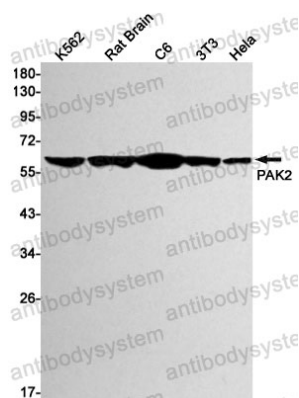
Note

For research use only.

Data Image

Immunohistochemical

Immunohistochemistry analysis of paraffin-embedded Human tonsil using PAK2 antibody. High-pressure and temperature Sodium Citrate pH 6.0 was used for antigen retrieval.



Western blot

Western blot analysis of PAK2 in K562, rat Brain, C6, 3T3, Hela lysates using PAK2 antibody.