

Anti-CHAF1B Antibody (R2D80)

Summary

Catalog No.	RHG40601
Clone ID	R2D80
Host species	Rabbit
Tested applications	FCM: 1:20-1:100, IF: 1:50-1:200, IHC: 1:100-1:200, IP: 1:20-1:50, WB: 1:1000-1:2000
Species reactivity	Human
Form	Liquid
Storage buffer	0.01M PBS, pH 7.4, 0.05% BSA, 50% Glycerol, 0.05% Sodium azide.
Concentration	1 mg/ml
Purity	>95% by SDS-PAGE.
Clonality	Monoclonal
Isotype	IgG
Applications	FCM, IF, IHC, IP, WB
Target	CAF-1 subunit B, MPP7, Chromatin assembly factor I p60 subunit, M-phase phosphoprotein 7, CAF-I 60 kDa subunit, CAF1A, MPHOSPH7, CAF1P60, CAF-I p60, Chromatin assembly factor 1 subunit B, CHAF1B
Purification	Protein A/G purified from cell culture supernatant.
Endotoxin level	Please contact with the lab for this information.
Accession	Q13112

Stability and Storage

Use a manual defrost freezer and avoid repeated freeze thaw cycles. Store at 4 °C for frequent use. Store at -20 °C for twelve months from the date of receipt.

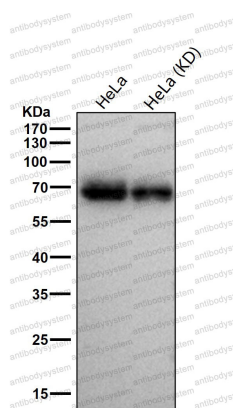
Note

For research use only.

Data Image

Western blot

Western blot analysis of p60 CAF1 expression in Caco2 cell lysate.



Western blot

All lanes use the Antibody at 1:2K dilution for 1 hour at room temperature.