

Anti-ILF3 Antibody (R2D55)

Summary

Catalog No.	RHG33301
Clone ID	R2D55
Host species	Rabbit
Tested applications	IF: 1:50-1:200, IHC: 1:50-1:100, IP: 1:20, WB: 1:500-1:1000
Species reactivity	Human, Rat
Form	Liquid
Storage buffer	0.01M PBS, pH 7.4, 0.05% BSA, 50% Glycerol, 0.05% Sodium azide.
Concentration	1 mg/ml
Purity	>95% by SDS-PAGE.
Clonality	Monoclonal
Isotype	IgG
Applications	IF, IHC, IP, WB
Target	ILF3, MPHOSPH4, DRBP76, TCP80, DRBF, Translational control protein 80, M-phase phosphoprotein 4, Nuclear factor associated with dsRNA, NF90, NFAR, MPP4, NF-AT-90, Double-stranded RNA-binding protein 76, Interleukin enhancer-binding factor 3, Nuclear factor of activated T-cells 90 kDa
Purification	Protein A/G purified from cell culture supernatant.
Endotoxin level	Please contact with the lab for this information.
Accession	Q12906

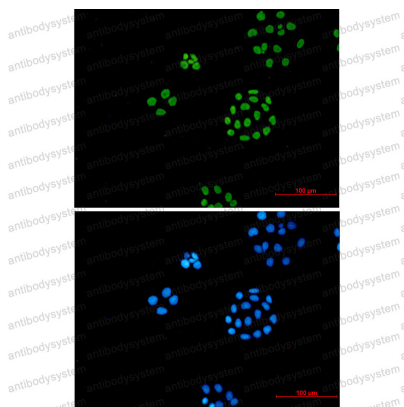
Stability and Storage

Use a manual defrost freezer and avoid repeated freeze thaw cycles. Store at 4 °C for frequent use. Store at -20 °C for twelve months from the date of receipt.

Note

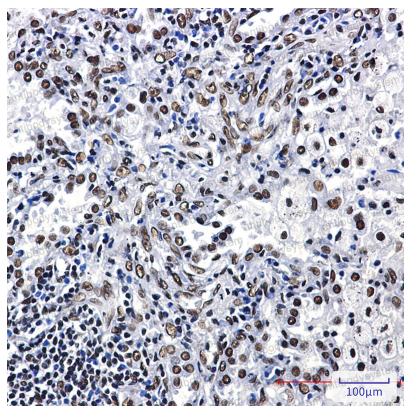
For research use only.

Data Image



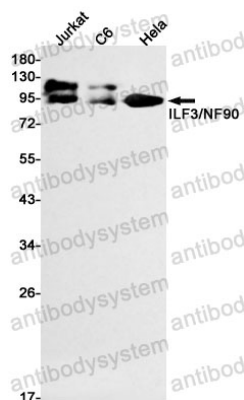
Immunofluorescence

Immunocytochemistry analysis of ILF3 (green) in hela using ILF3 antibody, and DAPI (blue)



Immunohistochemical

Immunohistochemistry analysis of paraffin-embedded Human lung cancer using ILF3 antibody. High-pressure and temperature Sodium Citrate pH 6.0 was used for antigen retrieval.



Western blot

Western blot analysis of ILF3/NF90 in Jurkat, C6, HeLa lysates using ILF3 antibody.