

Anti-CD91/LRP1 Antibody (R2D16)

Summary

Catalog No.	RHG14202
Clone ID	R2D16
Host species	Rabbit
Tested applications	IF: 1:50-1:200, IHC: 1:50-1:100, IP: 1:20, WB: 1:500-1:1000
Species reactivity	Human, Mouse, Rat
Form	Liquid
Storage buffer	0.01M PBS, pH 7.4, 0.05% BSA, 50% Glycerol, 0.05% Sodium azide.
Concentration	1 mg/ml
Purity	>95% by SDS-PAGE.
Clonality	Monoclonal
Isotype	IgG
Applications	IF, IHC, IP, WB
Target	APOER, LRP1, LRP-1, LRP-515, LRP-85, A2MR, Prolow-density lipoprotein receptor-related protein 1, Apolipoprotein E receptor, APR, CD91, LRPICD, Alpha-2-macroglobulin receptor
Purification	Protein A/G purified from cell culture supernatant.
Endotoxin level	Please contact with the lab for this information.
Accession	Q07954

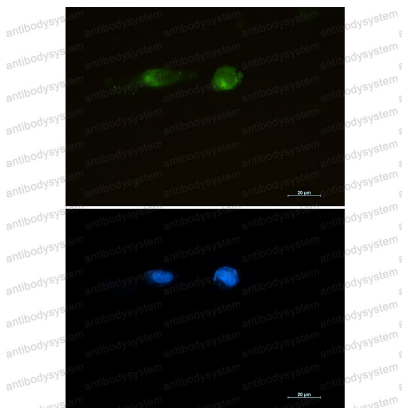
Stability and Storage

Use a manual defrost freezer and avoid repeated freeze thaw cycles. Store at 4 °C for frequent use. Store at -20 °C for twelve months from the date of receipt.

Note

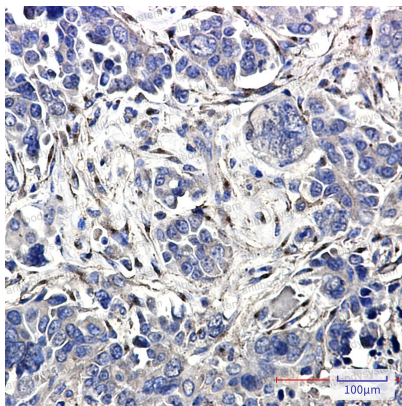
For research use only.

Data Image



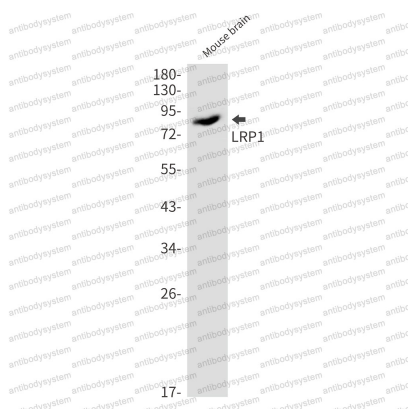
Immunofluorescence

Immunocytochemistry analysis of LRP1 (green) in U87-MG using LRP1 antibody, and DAPI (blue).



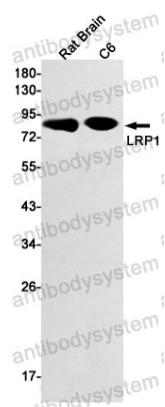
Immunohistochemical

Immunohistochemistry analysis of paraffin-embedded Human Cholangiocarcinoma using LRP1 antibody. High-pressure and temperature Sodium Citrate pH 6.0 was used for antigen retrieval.



Western blot

Western blot analysis of LRP1 in mouse brain lysates using LRP1 antibody.



Western blot

Western blot analysis of LRP1 in rat Brain, C6 lysates using LRP1 antibody