

Anti-Phospho-PRKCD/PKC delta (Ser299) Antibody (R2C71)

Summary

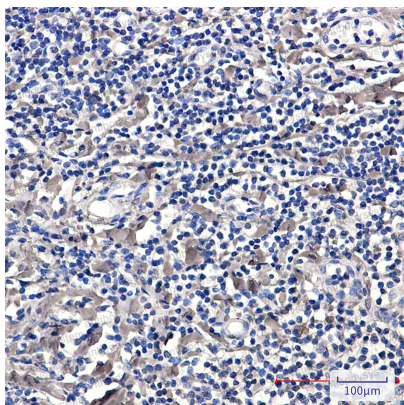
Catalog No.	RHG05501
Clone ID	R2C71
Host species	Rabbit
Tested applications	IHC: 1:50-1:100, IP: 1:20, WB: 1:500-1:1000
Species reactivity	Human
Form	Liquid
Storage buffer	0.01M PBS, pH 7.4, 0.05% BSA, 50% Glycerol, 0.05% Sodium azide.
Concentration	1 mg/ml
Purity	>95% by SDS-PAGE.
Clonality	Monoclonal
Isotype	IgG
Applications	IHC, IP, WB
Target	Sphingosine-dependent protein kinase-1, PRKCD, Protein kinase C delta type, PKCD, nPKC-delta, Tyrosine-protein kinase PRKCD, SDK1
Purification	Protein A/G purified from cell culture supernatant.
Endotoxin level	Please contact with the lab for this information.
Accession	Q05655

Stability and Storage

Use a manual defrost freezer and avoid repeated freeze thaw cycles. Store at 4 °C for frequent use. Store at -20 °C for twelve months from the date of receipt.

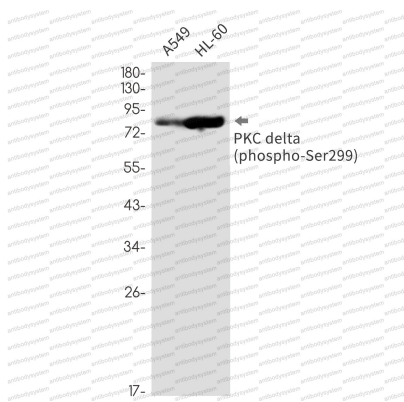
Note

For research use only.

Data Image

Immunohistochemical

Immunohistochemistry analysis of paraffin-embedded Human tonsil using PKC delta (Phospho-Ser299) antibody. High-pressure and temperature Sodium Citrate pH 6.0 was used for antigen retrieval.



Western blot

Western blot analysis of Phospho-PKC delta (Ser299) in A549, HL-60 lysates using Phospho-PKC delta (Ser299) antibody.