

Anti-CYP4A11 Antibody (R2C28)

Summary

Catalog No.	RHF96601
Clone ID	R2C28
Host species	Rabbit
Tested applications	IHC: 1:100-1:200, IP: 1:20-1:50, WB: 1:1000-1:2000
Species reactivity	Human, Mouse, Rat
Form	Liquid
Storage buffer	0.01M PBS, pH 7.4, 0.05% BSA, 50% Glycerol, 0.05% Sodium azide.
Concentration	1 mg/ml
Purity	>95% by SDS-PAGE.
Clonality	Monoclonal
Isotype	IgG
Applications	IHC, IP, WB
Target	Cytochrome P450HL-omega, 20-hydroxyeicosatetraenoic acid synthase, Long-chain fatty acid omega-monooxygenase, Fatty acid omega-hydroxylase, Cytochrome P450 4A11, Lauric acid omega-hydroxylase, CYP4A2, CYP4AII, CYP4A11, CYP11A11, 20-HETE synthase, Cytochrome P-450HK-omega
Purification	Protein A/G purified from cell culture supernatant.
Endotoxin level	Please contact with the lab for this information.
Accession	Q02928

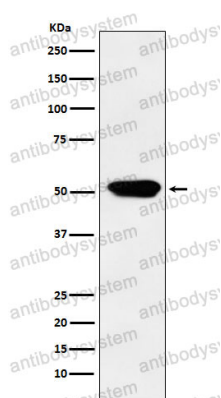
Stability and Storage

Use a manual defrost freezer and avoid repeated freeze thaw cycles. Store at 4 °C for frequent use. Store at -20 °C for twelve months from the date of receipt.

Note

For research use only.

Data Image



Western blot

Western blot analysis of Cytochrome P450 4A expression in Human fetal kidney lysate.