

Anti-MEK1/2 Antibody (R2C25)

Summary

| | |
|----------------------------|--|
| Catalog No. | RHF95509 |
| Clone ID | R2C25 |
| Host species | Rabbit |
| Tested applications | IF: 1:50-1:200, IHC: 1:50-1:100, IP: 1:20, WB: 1:500-1:1000 |
| Species reactivity | Human, Mouse, Rat |
| Form | Liquid |
| Storage buffer | 0.01M PBS, pH 7.4, 0.05% BSA, 50% Glycerol, 0.05% Sodium azide. |
| Concentration | 1 mg/ml |
| Purity | >95% by SDS-PAGE. |
| Clonality | Monoclonal |
| Isotype | IgG |
| Applications | IF, IHC, IP, WB |
| Target | ERK activator kinase 1, MKK1, MAPK/ERK kinase 1, MAPKK 1, MAP kinase kinase 1, MEK 1, MEK1, Dual specificity mitogen-activated protein kinase kinase 1, PRKMK1, MAP2K1 |
| Purification | Protein A/G purified from cell culture supernatant. |
| Endotoxin level | Please contact with the lab for this information. |
| Accession | Q02750, P36507 |

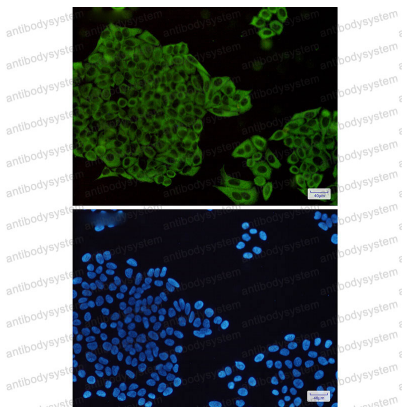
Stability and Storage

Use a manual defrost freezer and avoid repeated freeze thaw cycles. Store at 4 °C for frequent use. Store at -20 °C for twelve months from the date of receipt.

Note

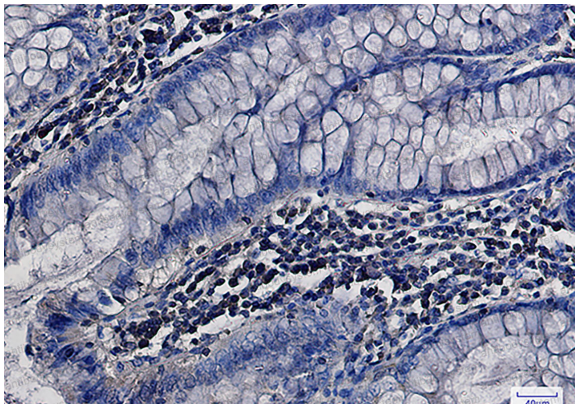
For research use only.

Data Image



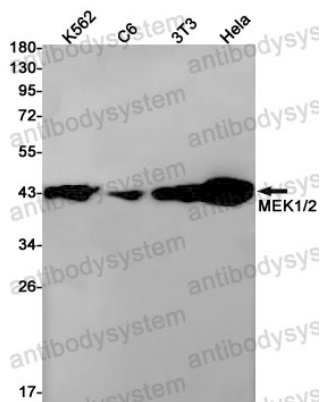
Immunofluorescence

Immunocytochemistry analysis of MEK1/2(green) in Hela using MEK1/2 antibody, and DAPI(blue)



Immunohistochemical

Immunohistochemistry analysis of paraffin-embedded Human colon cancer using MEK1/2 antibody. High-pressure and temperature Sodium Citrate pH 6.0 was used for antigen retrieval.



Western blot

Western blot analysis of MEK1/2 in K562, C6, 3T3, HeLa lysates using MEK1/2 antibody.