

Anti-PFKP Antibody (R2B99)

Summary

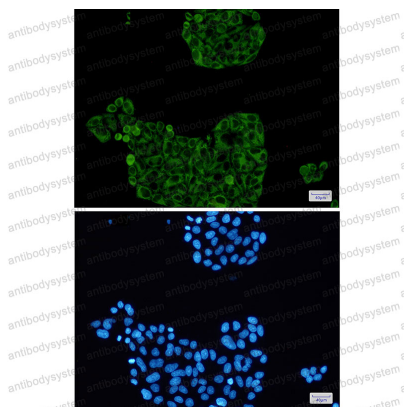
Catalog No.	RHF89301
Clone ID	R2B99
Host species	Rabbit
Tested applications	IF: 1:50-1:200, IP: 1:20, WB: 1:500-1:1000
Species reactivity	Human, Mouse, Rat
Form	Liquid
Storage buffer	0.01M PBS, pH 7.4, 0.05% BSA, 50% Glycerol, 0.05% Sodium azide.
Concentration	1 mg/ml
Purity	>95% by SDS-PAGE.
Clonality	Monoclonal
Isotype	IgG
Applications	IF, IP, WB
Target	Phosphofructo-1-kinase isozyme C, ATP-dependent 6-phosphofructokinase, platelet type, PFK-P, PFKF, ATP-PFK, PFKP, 6-phosphofructokinase type C, Phosphohexokinase, PFK-C
Purification	Protein A/G purified from cell culture supernatant.
Endotoxin level	Please contact with the lab for this information.
Accession	Q01813

Stability and Storage

Use a manual defrost freezer and avoid repeated freeze thaw cycles. Store at 4 °C for frequent use. Store at -20 °C for twelve months from the date of receipt.

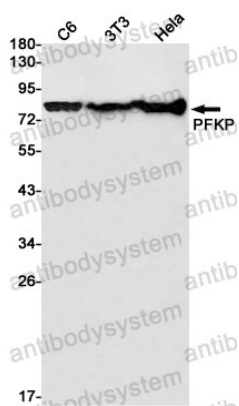
Note

For research use only.

Data Image

Immunofluorescence

Immunocytochemistry analysis of PFKP(green) in HeLa using PFKP antibody, and DAPI(blue)



Western blot

Western blot analysis of PFKP in C6, 3T3, HeLa lysates using PFKP antibody.