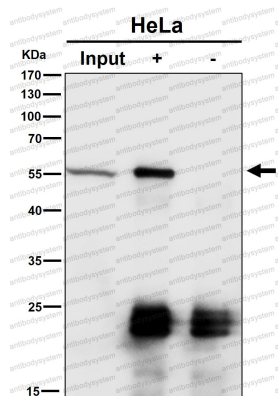


Anti-CAP1 Antibody (R2B94)

Summary

Catalog No.	RHF87301
Clone ID	R2B94
Host species	Rabbit
Tested applications	IF: 1:50-1:200, IHC: 1:100-1:200, IP: 1:20-1:50, WB: 1:1000-1:2000
Species reactivity	Human
Form	Liquid
Storage buffer	0.01M PBS, pH 7.4, 0.05% BSA, 50% Glycerol, 0.05% Sodium azide.
Concentration	1 mg/ml
Purity	>95% by SDS-PAGE.
Clonality	Monoclonal
Isotype	IgG
Applications	IF, IHC, IP, WB
Target	Adenylyl cyclase-associated protein 1, CAP 1, CAP, CAP1
Purification	Protein A/G purified from cell culture supernatant.
Endotoxin level	Please contact with the lab for this information.
Accession	Q01518
Stability and Storage	Use a manual defrost freezer and avoid repeated freeze thaw cycles. Store at 4 °C for frequent use. Store at -20 °C for twelve months from the date of receipt.
Note	For research use only.

Data Image



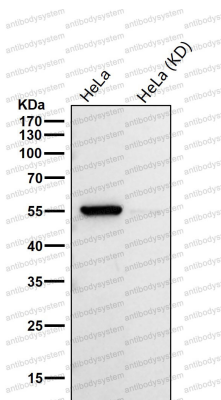
Immunoprecipitation

Immunoprecipitate (IP) analysis using the Antibody at 1:50 dilution. (wb at 1:3K dilution)



Western blot

Western blot analysis of CAP1 expression in Raji cell lysate.



Western blot

All lanes use the Antibody at 1:1K dilution for 1 hour at room temperature.