

Anti-E2F1/RBBP3 Antibody (R2B86)

Summary

Catalog No.	RHF85301
Clone ID	R2B86
Host species	Rabbit
Tested applications	IF: 1:50-1:200, IHC: 1:50-1:100, IP: 1:20, WB: 1:500-1:1000
Species reactivity	Human, Mouse, Rat
Form	Liquid
Storage buffer	0.01M PBS, pH 7.4, 0.05% BSA, 50% Glycerol, 0.05% Sodium azide.
Concentration	1 mg/ml
Purity	>95% by SDS-PAGE.
Clonality	Monoclonal
Isotype	IgG
Applications	IF, IHC, IP, WB
Target	Retinoblastoma-binding protein 3, Retinoblastoma-associated protein 1, RBBP-3, Transcription factor E2F1, RBBP3, E2F1, E2F-1, RBAP-1, pRB-binding protein E2F-1, PBR3
Purification	Protein A/G purified from cell culture supernatant.
Endotoxin level	Please contact with the lab for this information.
Accession	Q01094

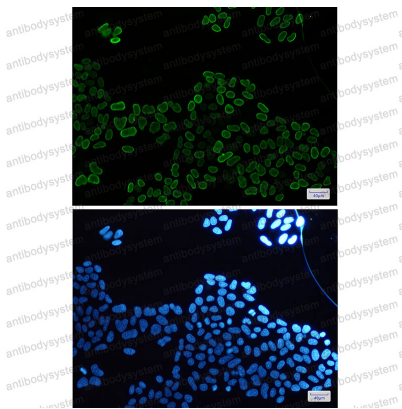
Stability and Storage

Use a manual defrost freezer and avoid repeated freeze thaw cycles. Store at 4 °C for frequent use. Store at -20 °C for twelve months from the date of receipt.

Note

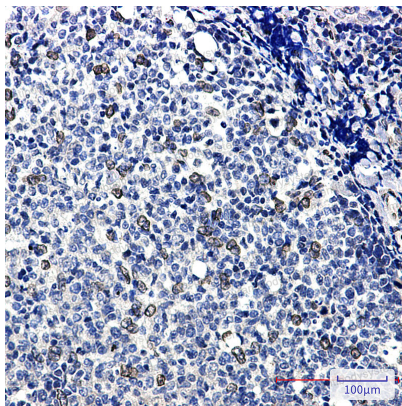
For research use only.

Data Image



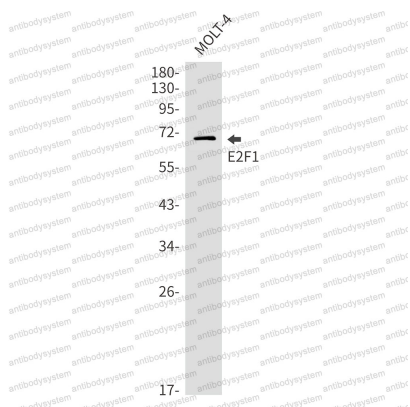
Immunofluorescence

Immunocytochemistry analysis of E2F1(green) in Hela using E2F1 antibody, and DAPI(blue)



Immunohistochemical

Immunohistochemistry analysis of paraffin-embedded Human tonsil using E2F1 antibody. High-pressure and temperature Sodium Citrate pH 6.0 was used for antigen retrieval.



Western blot analysis of E2F1 in MOLT4 lysates using E2F1 antibody.

Western blot



Western blot analysis of E2F1 in C6, 3T3 lysates using E2F1 antibody.

Western blot