

Anti-PDE1B Antibody (R2B85)

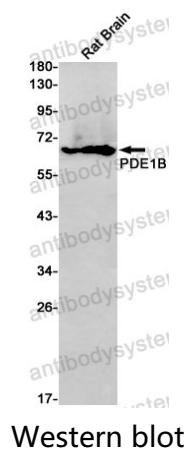
Summary

Catalog No.	RHF84901
Clone ID	R2B85
Host species	Rabbit
Tested applications	WB: 1:500-1:1000
Species reactivity	Human, Mouse, Rat
Form	Liquid
Storage buffer	0.01M PBS, pH 7.4, 0.05% BSA, 50% Glycerol, 0.05% Sodium azide.
Concentration	1 mg/ml
Purity	>95% by SDS-PAGE.
Clonality	Monoclonal
Isotype	IgG
Applications	WB
Target	Cam-PDE 1B, PDE1B1, PDES1B, PDE1B, Calcium/calmodulin-dependent 3',5'-cyclic nucleotide phosphodiesterase 1B, 63 kDa Cam-PDE
Purification	Protein A/G purified from cell culture supernatant.
Endotoxin level	Please contact with the lab for this information.
Accession	Q01064
Stability and Storage	Use a manual defrost freezer and avoid repeated freeze thaw cycles. Store at 4 °C for frequent use. Store at -20 °C for twelve months from the date of receipt.

Note

For research use only.

Data Image



Western blot analysis of PDE1B in rat Brain lysates using PDE1B antibody.