

Anti-CDK6 Antibody (R2B72)

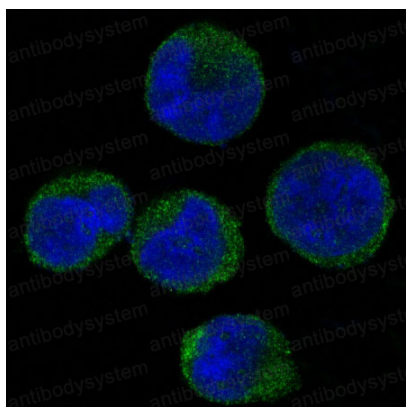
Summary

Catalog No.	RHF82102
Clone ID	R2B72
Host species	Rabbit
Tested applications	FCM: 1:20-1:100, IF: 1:50-1:200, IHC: 1:100-1:200, WB: 1:1000-1:5000
Species reactivity	Human
Form	Liquid
Storage buffer	0.01M PBS, pH 7.4, 0.05% BSA, 50% Glycerol, 0.05% Sodium azide.
Concentration	1 mg/ml
Purity	>95% by SDS-PAGE.
Clonality	Monoclonal
Isotype	IgG
Applications	FCM, IF, IHC, WB
Target	Cell division protein kinase 6, Cyclin-dependent kinase 6, Serine/threonine-protein kinase PLSTIRE, CDKN6, CDK6
Purification	Protein A/G purified from cell culture supernatant.
Endotoxin level	Please contact with the lab for this information.
Accession	Q00534
Stability and Storage	Use a manual defrost freezer and avoid repeated freeze thaw cycles. Store at 4 °C for frequent use. Store at -20 °C for twelve months from the date of receipt.

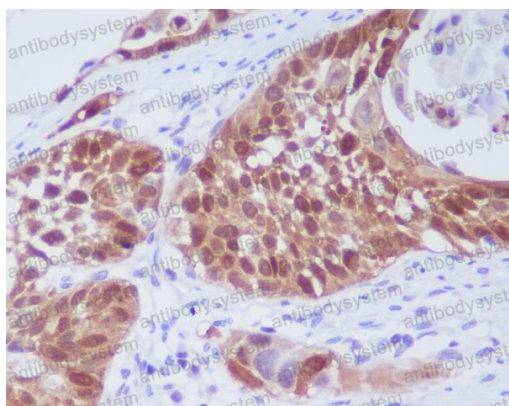
Note

For research use only.

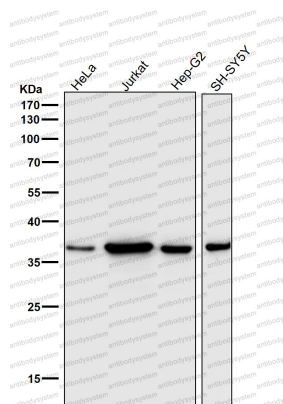
Data Image

**Immunofluorescence**

Immunofluorescent analysis of K562 cells, using CDK6 Antibody.

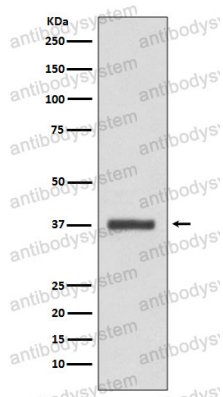
**Immunohistochemical**

Immunohistochemical analysis of paraffin-embedded human lung cancer, using CDK6 Antibody.



Western blot

All lanes use the Antibody at 1:5000 dilution for 1 hour at room temperature.



Western blot

Western blot analysis of CDK6 expression in HeLa cell lysate.