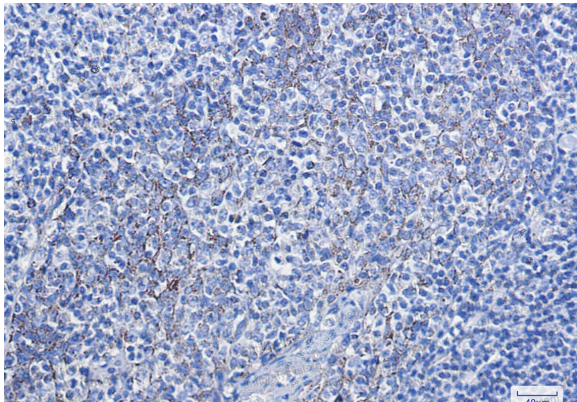


Anti-CYCS Antibody (R2B62)

Summary

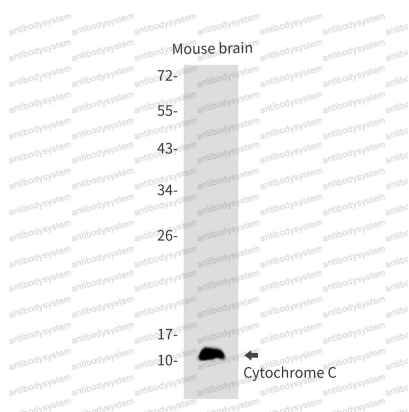
Catalog No.	RHF80801
Clone ID	R2B62
Host species	Rabbit
Tested applications	IHC: 1:50-1:100, IP: 1:20, WB: 1:500-1:1000
Species reactivity	Human, Mouse, Rat
Form	Liquid
Storage buffer	0.01M PBS, pH 7.4, 0.05% BSA, 50% Glycerol, 0.05% Sodium azide.
Concentration	1 mg/ml
Purity	>95% by SDS-PAGE.
Clonality	Monoclonal
Isotype	IgG
Applications	IHC, IP, WB
Target	CYC, Cytochrome c, CYCS
Purification	Protein A/G purified from cell culture supernatant.
Endotoxin level	Please contact with the lab for this information.
Accession	P99999
Stability and Storage	Use a manual defrost freezer and avoid repeated freeze thaw cycles. Store at 4 °C for frequent use. Store at -20 °C for twelve months from the date of receipt.
Note	For research use only.

Data Image



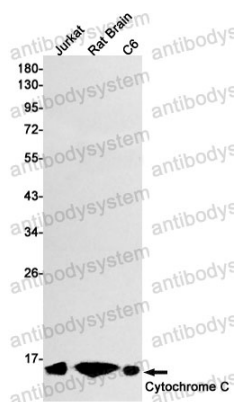
Immunohistochemical

Immunohistochemistry analysis of paraffin-embedded Human tonsil using Cytochrome C antibody. High-pressure and temperature Sodium Citrate pH 6.0 was used for antigen retrieval.



Western blot

Western blot analysis of Cytochrome C in mouse brain lysates using Cytochrome C antibody.



Western blot

Western blot analysis of Cytochrome C in Jurkat, rat Brain, C6 lysates using Cytochrome C antibody.