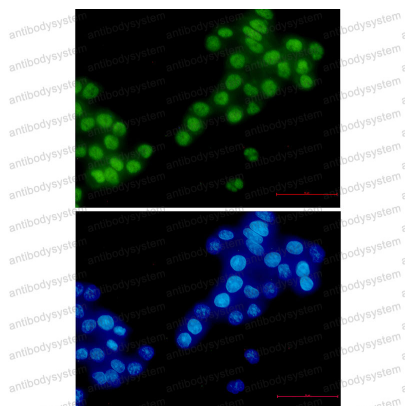


Anti-RBM3 Antibody (R2B60)

Summary

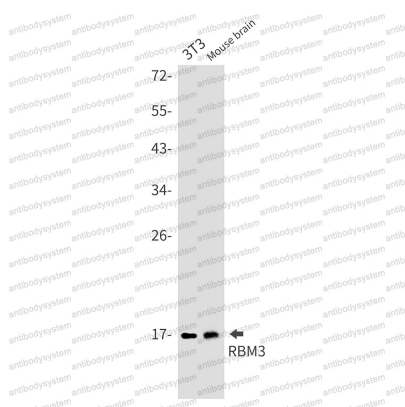
Catalog No.	RHF80201
Clone ID	R2B60
Host species	Rabbit
Tested applications	IF: 1:50-1:200, WB: 1:500-1:1000
Species reactivity	Human, Mouse
Form	Liquid
Storage buffer	0.01M PBS, pH 7.4, 0.05% BSA, 50% Glycerol, 0.05% Sodium azide.
Concentration	1 mg/ml
Purity	>95% by SDS-PAGE.
Clonality	Monoclonal
Isotype	IgG
Applications	IF, WB
Target	RNA-binding motif protein 3, RNPL, RBM3, RNA-binding protein 3
Purification	Protein A/G purified from cell culture supernatant.
Endotoxin level	Please contact with the lab for this information.
Accession	P98179
Stability and Storage	Use a manual defrost freezer and avoid repeated freeze thaw cycles. Store at 4 °C for frequent use. Store at -20 °C for twelve months from the date of receipt.
Note	For research use only.

Data Image



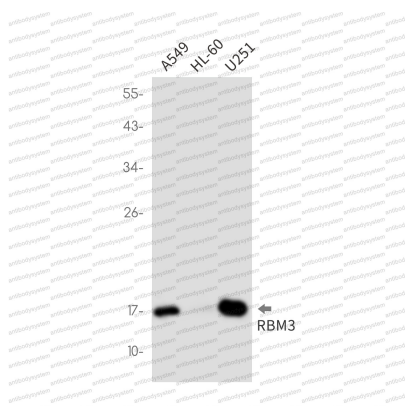
Immunofluorescence

Immunocytochemistry analysis of RBM3 (green) in hela using RBM3 antibody, and DAPI(blue)



Western blot

Western blot analysis of RBM3 in 3T3, mouse brain lysates using RBM3 antibody.



Western blot

Western blot analysis of RBM3 in A549, HL-60, U251 lysates using RBM3 antibody.