

Anti-SMAD3 Antibody (R2B47)

Summary

Catalog No.	RHF75505
Clone ID	R2B47
Host species	Rabbit
Tested applications	IP: 1:20, WB: 1:500-1:1000
Species reactivity	Human, Mouse, Rat, Hamster
Form	Liquid
Storage buffer	0.01M PBS, pH 7.4, 0.05% BSA, 50% Glycerol, 0.05% Sodium azide.
Concentration	1 mg/ml
Purity	>95% by SDS-PAGE.
Clonality	Monoclonal
Isotype	IgG
Applications	IP, WB
Target	Mad3, JV15-2, Mothers against decapentaplegic homolog 3, SMAD family member 3, Smad3, SMAD3, MADH3, hMAD-3, SMAD 3, MAD homolog 3, hSMAD3, Mothers against DPP homolog 3
Purification	Protein A/G purified from cell culture supernatant.
Endotoxin level	Please contact with the lab for this information.
Accession	P84022

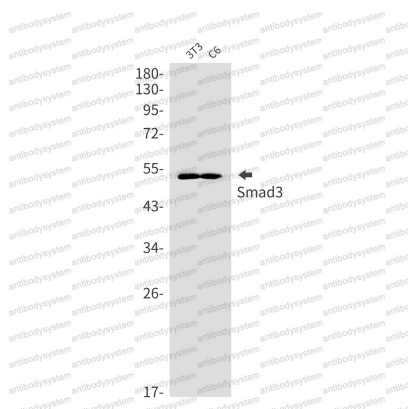
Stability and Storage

Use a manual defrost freezer and avoid repeated freeze thaw cycles. Store at 4 °C for frequent use. Store at -20 °C for twelve months from the date of receipt.

Note

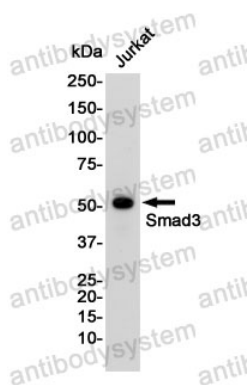
For research use only.

Data Image



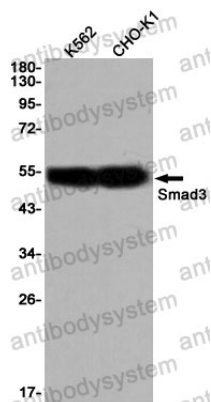
Western blot

Western blot analysis of Smad3 in 3T3, C6 lysates using Smad3 antibody.



Western blot

Western blot analysis of Smad3 in Jurkat lysates using Smad3 antibody.



Western blot

Western blot analysis of Smad3 in K562, CHO-K1 lysates using Smad3 antibody