

Anti-Phospho-Smad3 (Ser423/425) Antibody (R2B45)

Summary

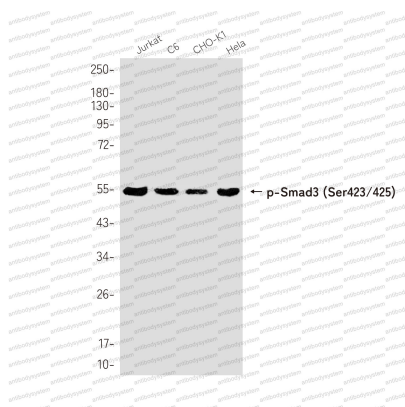
Catalog No.	RHF75503
Clone ID	R2B45
Host species	Rabbit
Tested applications	WB: 1:500-1:1000
Species reactivity	Human, Rat, Hamster
Form	Liquid
Storage buffer	0.01M PBS, pH 7.4, 0.05% BSA, 50% Glycerol, 0.05% Sodium azide.
Concentration	1 mg/ml
Purity	>95% by SDS-PAGE.
Clonality	Monoclonal
Isotype	IgG
Applications	WB
Target	Mad3, JV15-2, Mothers against decapentaplegic homolog 3, SMAD family member 3, Smad3, SMAD3, MADH3, hMAD-3, SMAD 3, MAD homolog 3, hSMAD3, Mothers against DPP homolog 3
Purification	Protein A/G purified from cell culture supernatant.
Endotoxin level	Please contact with the lab for this information.
Accession	P84022

Stability and Storage

Use a manual defrost freezer and avoid repeated freeze thaw cycles. Store at 4 °C for frequent use. Store at -20 °C for twelve months from the date of receipt.

Note

For research use only.

Data Image

Western blot

Western blot analysis of Phospho-Smad3 (Ser423/425) in Jurkat, C6, CHO-K1, Hela lysates using Phospho-Smad3 (Ser423/425) antibody.