

# Anti-NTHL1 Antibody (R2B36)

## Summary

---

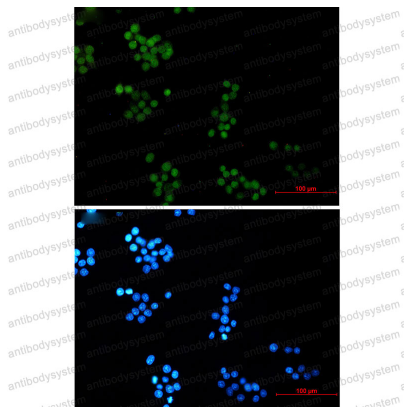
<b>Catalog No.</b>	RHF69401
<b>Clone ID</b>	R2B36
<b>Host species</b>	Rabbit
<b>Tested applications</b>	IF: 1:50-1:200, WB: 1:500-1:1000
<b>Species reactivity</b>	Human
<b>Form</b>	Liquid
<b>Storage buffer</b>	0.01M PBS, pH 7.4, 0.05% BSA, 50% Glycerol, 0.05% Sodium azide.
<b>Concentration</b>	1 mg/ml
<b>Purity</b>	>95% by SDS-PAGE.
<b>Clonality</b>	Monoclonal
<b>Isotype</b>	IgG
<b>Applications</b>	IF, WB
<b>Target</b>	NTH1, Endonuclease III-like protein 1, Bifunctional DNA N-glycosylase/DNA-(apurinic or apyrimidinic site) lyase, hNTH1, NTHL1, DNA glycosylase/AP lyase, OCTS3
<b>Purification</b>	Protein A/G purified from cell culture supernatant.
<b>Endotoxin level</b>	Please contact with the lab for this information.
<b>Accession</b>	P78549

**Stability and Storage**

Use a manual defrost freezer and avoid repeated freeze thaw cycles. Store at 4 °C for frequent use. Store at -20 °C for twelve months from the date of receipt.

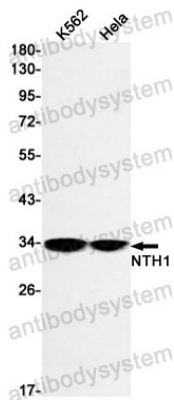
**Note**

For research use only.

**Data Image**

Immunofluorescence

Immunocytochemistry analysis of NTH1 (green) in HeLa using NTH1 antibody, and DAPI (blue).



Western blot

Western blot analysis of NTH1 in K562, HeLa lysates using NTH1 antibody.