

Anti-ELF3 Antibody (R2B34)

Summary

| | |
|----------------------------|---|
| Catalog No. | RHF69301 |
| Clone ID | R2B34 |
| Host species | Rabbit |
| Tested applications | FCM: 1:20-1:100, WB: 1:1000-1:2000 |
| Species reactivity | Human, Mouse, Rat |
| Form | Liquid |
| Storage buffer | 0.01M PBS, pH 7.4, 0.05% BSA, 50% Glycerol, 0.05% Sodium azide. |
| Concentration | 1 mg/ml |
| Purity | >95% by SDS-PAGE. |
| Clonality | Monoclonal |
| Isotype | IgG |
| Applications | FCM, WB |
| Target | ETS-related transcription factor Elf-3, Epithelial-restricted with serine box, JEN, Epithelium-restricted Ets protein ESX, E74-like factor 3, ESX, Epithelium-specific Ets transcription factor 1, ESE-1, ERT, ELF3 |
| Purification | Protein A/G purified from cell culture supernatant. |
| Endotoxin level | Please contact with the lab for this information. |
| Accession | P78545 |

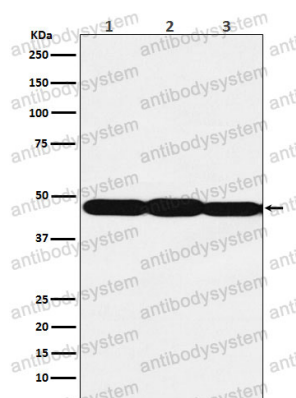
Stability and Storage

Use a manual defrost freezer and avoid repeated freeze thaw cycles. Store at 4 °C for frequent use. Store at -20 °C for twelve months from the date of receipt.

Note

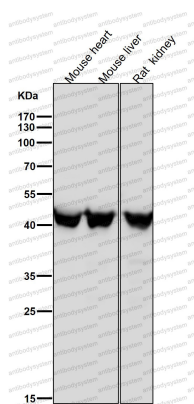
For research use only.

Data Image



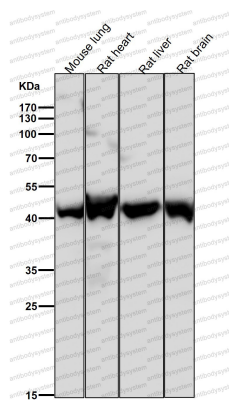
Western blot

Western blot analysis of ESE1 expression in (1) A431 cell lysate; (2) NIH/3T3 cell lysate; (3) C6 cell lysate.



Western blot

All lanes use the Antibody at 1:2K dilution for 1 hour at room temperature.



Western blot

All lanes use the Antibody at 1:2K dilution for 1 hour at room temperature.