

Anti-GTF2I Antibody (R2B25)

Summary

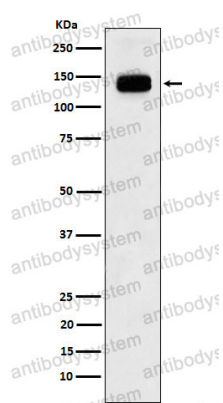
Catalog No.	RHF65102
Clone ID	R2B25
Host species	Rabbit
Tested applications	IF: 1:50-1:200, IHC: 1:100-1:200, WB: 1:1000-1:2000
Species reactivity	Human, Mouse, Rat
Form	Liquid
Storage buffer	0.01M PBS, pH 7.4, 0.05% BSA, 50% Glycerol, 0.05% Sodium azide.
Concentration	1 mg/ml
Purity	>95% by SDS-PAGE.
Clonality	Monoclonal
Isotype	IgG
Applications	IF, IHC, WB
Target	SPIN, General transcription factor II-I, BAP135, Bruton tyrosine kinase-associated protein 135, WBSCR6, BAP-135, TFII-I, SRF-Phox1-interacting protein, Williams-Beuren syndrome chromosomal region 6 protein, BTK-associated protein 135, GTF2I, GTFII-I
Purification	Protein A/G purified from cell culture supernatant.
Endotoxin level	Please contact with the lab for this information.
Accession	P78347

Stability and Storage

Use a manual defrost freezer and avoid repeated freeze thaw cycles. Store at 4 °C for frequent use. Store at -20 °C for twelve months from the date of receipt.

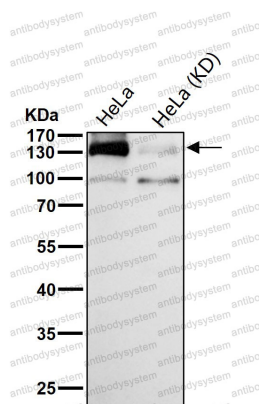
Note

For research use only.

Data Image

Western blot

Western blot analysis of GTF2I expression in Jurkat cell lysate.



Western blot

All lanes use the Antibody at 1:1k dilution for 1 hour at room temperature.