

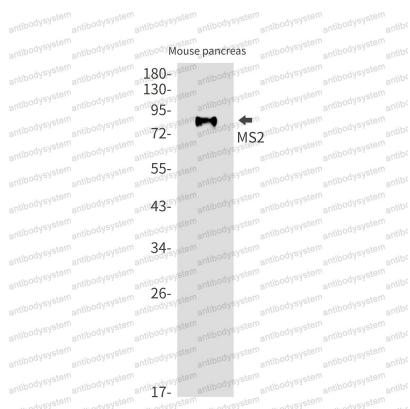
Anti-CD156a/ADAM8 Antibody (R2B24)

Summary

Catalog No.	RHF64102
Clone ID	R2B24
Host species	Rabbit
Tested applications	IP: 1:20, WB: 1:500-1:1000
Species reactivity	Human, Mouse
Form	Liquid
Storage buffer	0.01M PBS, pH 7.4, 0.05% BSA, 50% Glycerol, 0.05% Sodium azide.
Concentration	1 mg/ml
Purity	>95% by SDS-PAGE.
Clonality	Monoclonal
Isotype	IgG
Applications	IP, WB
Target	Disintegrin and metalloproteinase domain-containing protein 8, ADAM8, CD156a, MS2, Cell surface antigen MS2, ADAM 8
Purification	Protein A/G purified from cell culture supernatant.
Endotoxin level	Please contact with the lab for this information.
Accession	P78325
Stability and Storage	Use a manual defrost freezer and avoid repeated freeze thaw cycles. Store at 4 °C for frequent use. Store at -20 °C for twelve months from the date of receipt.

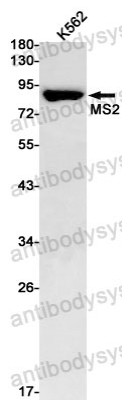
Note For research use only.

Data Image



Western blot

Western blot analysis of MS2 in mouse pancreas lysates using MS2 antibody.



Western blot

Western blot analysis of MS2 in K562 lysates using MS2 antibody.