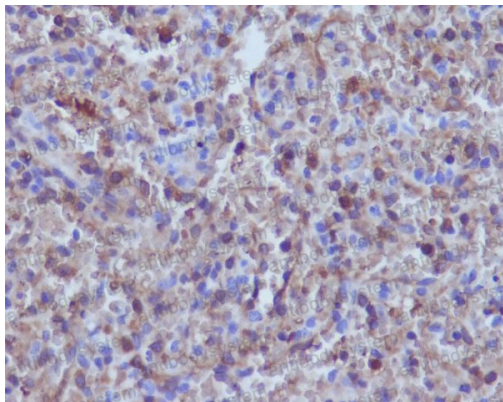


Anti-HBA1/B Antibody (R2B21)

Summary

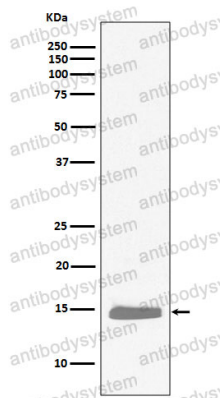
Catalog No.	RHF63302
Clone ID	R2B21
Host species	Rabbit
Tested applications	FCM: 1:20-1:100, IHC: 1:100-1:200, IP: 1:20-1:50, WB: 1:1000-1:2000
Species reactivity	Human, Mouse, Rat
Form	Liquid
Storage buffer	0.01M PBS, pH 7.4, 0.05% BSA, 50% Glycerol, 0.05% Sodium azide.
Concentration	1 mg/ml
Purity	>95% by SDS-PAGE.
Clonality	Monoclonal
Isotype	IgG
Applications	FCM, IHC, IP, WB
Target	HBA1, Alpha-globin, Hemoglobin subunit alpha, Hemoglobin alpha chain
Purification	Protein A/G purified from cell culture supernatant.
Endotoxin level	Please contact with the lab for this information.
Accession	P69905
Stability and Storage	Use a manual defrost freezer and avoid repeated freeze thaw cycles. Store at 4 °C for frequent use. Store at -20 °C for twelve months from the date of receipt.
Note	For research use only.

Data Image



Immunohistochemical

Immunohistochemical analysis of paraffin-embedded human spleen, using hemoglobin subunit alpha Antibody.



Western blot

Western blot analysis of Hemoglobin subunit alpha expression in K562 cell lysate.