

Anti-Histone H3 (acetyl K23) Antibody (R2B06)

Summary

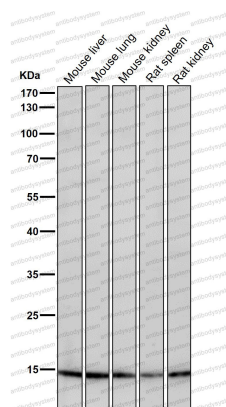
Catalog No.	RHF62732
Clone ID	R2B06
Host species	Rabbit
Tested applications	IF: 1:50-1:200, ChIP: 1:20-1:50, WB: 1:1000-1:2000
Species reactivity	Human, Mouse
Form	Liquid
Storage buffer	0.01M PBS, pH 7.4, 0.05% BSA, 50% Glycerol, 0.05% Sodium azide.
Concentration	1 mg/ml
Purity	>95% by SDS-PAGE.
Clonality	Monoclonal
Isotype	IgG
Applications	IF, ChIP, WB
Target	Histone H3/j, Histone H3/b, Histone H3/d, Histone H3/c, HIST1H3B, H3FH, Histone H3/f, H3FF, H3FK, HIST1H3G, H3FL, H3FB, HIST1H3D, Histone H3/a, H3FI, Histone H3/i, H3FD, HIST1H3A, Histone H3/h, HIST1H3I, HIST1H3E, HIST1H3H, HIST1H3J, H3C1, H3FC HIST1H3C, H3FA, Histone H3.1, H3FJ, Histone H3/l, Histone H3/k, HIST1H3F
Purification	Protein A/G purified from cell culture supernatant.
Endotoxin level	Please contact with the lab for this information.
Accession	P68431, P84243, Q16695, Q6NXT2, Q71DI3

Stability and Storage

Use a manual defrost freezer and avoid repeated freeze thaw cycles. Store at 4 °C for frequent use. Store at -20 °C for twelve months from the date of receipt.

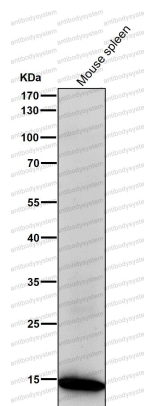
Note

For research use only.

Data Image

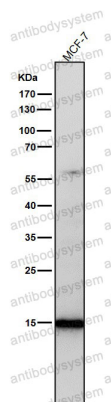
Western blot

All lanes use the Antibody at 1:1K dilution for 1 hour at room temperature.



Western blot

All lanes use the Antibody at 1:1K dilution for 1 hour at room temperature.



Western blot

All lanes use the Antibody at 1:1K dilution for 1 hour at room temperature.