

Anti-YBX1 Antibody (R2A76)

Summary

Catalog No.	RHF61302
Clone ID	R2A76
Host species	Rabbit
Tested applications	IF: 1:50-1:200, IHC: 1:50-1:100, IP: 1:20, WB: 1:500-1:1000
Species reactivity	Human, Mouse, Hamster
Form	Liquid
Storage buffer	0.01M PBS, pH 7.4, 0.05% BSA, 50% Glycerol, 0.05% Sodium azide.
Concentration	1 mg/ml
Purity	>95% by SDS-PAGE.
Clonality	Monoclonal
Isotype	IgG
Applications	IF, IHC, IP, WB
Target	DBPB, EFI-A, Y-box-binding protein 1, Enhancer factor I subunit A, Y-box transcription factor, YB1, NSEP1, YBX1, Nuclease-sensitive element-binding protein 1, CBF-A, CCAAT-binding transcription factor I subunit A, DNA-binding protein B, YB-1
Purification	Protein A/G purified from cell culture supernatant.
Endotoxin level	Please contact with the lab for this information.
Accession	P67809

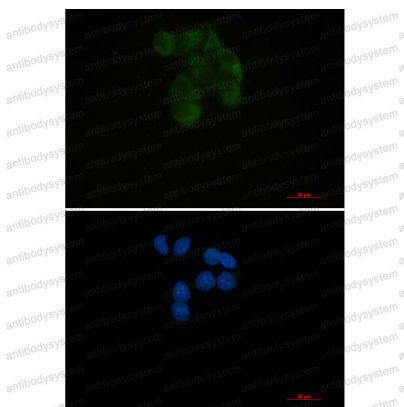
Stability and Storage

Use a manual defrost freezer and avoid repeated freeze thaw cycles. Store at 4 °C for frequent use. Store at -20 °C for twelve months from the date of receipt.

Note

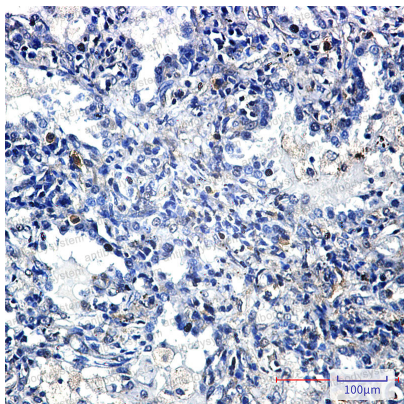
For research use only.

Data Image



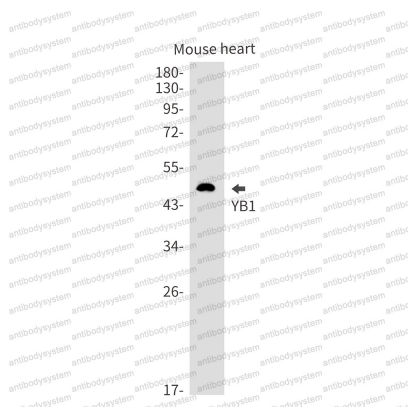
Immunofluorescence

Immunocytochemistry analysis of YB1 (green) in Hela using YB1 antibody, and DAPI (blue).



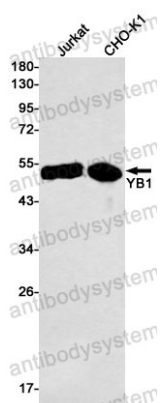
Immunohistochemical

Immunohistochemistry analysis of paraffin-embedded Human lung cancer using YB1 antibody. High-pressure and temperature Sodium Citrate pH 6.0 was used for antigen retrieval.



Western blot

Western blot analysis of YB1 in mouse heart lysates using YB1 antibody.



Western blot

Western blot analysis of YB1 in Jurkat, Hela lysates using YB1 antibody