

# Research Grade Remtolumab

## Summary

---

|                           |   |
|---------------------------|---|
| <b>Catalog No.</b>        | DHH28809  |
| <b>Alternative Names</b>  | Bispecific, A-1230717, ABT-122, CAS: 1791410-27-9   |
| <b>Clone ID</b>           | Remtolumab  |
| <b>Host species</b>       | Human   |
| <b>Species reactivity</b> | Human   |
| <b>Form</b>               | Liquid  |
| <b>Storage buffer</b>     | 0.01M PBS, pH 7.4.  |
| <b>Concentration</b>      | 1.65 mg/ml  |
| <b>Purity</b>             | >95% as determined by SDS-PAGE.   |
| <b>Clonality</b>          | Monoclonal  |
| <b>Isotype</b>            | [VH-VH'-H-Gamma1-VL-VL'-C-kappa]-dimer  |
| <b>Applications</b>       | Research Grade Biosimilar   |
| <b>Target</b>             | CTLA-8, Cytotoxic T-lymphocyte-associated antigen 8, IL17, IL-17A, IL17A, CTLA8, IL-17, Interleukin-17A, TNF, Tumor necrosis factor ligand superfamily member 2, N-terminal fragment, ICD2, NTF, TNF-a, TNF-alpha, Tumor necrosis factor, TNFSF2, TNFA, Cachectin, ICD1 |
| <b>Purification</b>       | Protein A/G purified from cell culture supernatant.   |
| <b>Endotoxin level</b>    | Please contact with the lab for this information.   |
| <b>Expression system</b>  | Mammalian Cells   |
| <b>Accession</b>          | Q16552 & P01375   |

## Stability and Storage

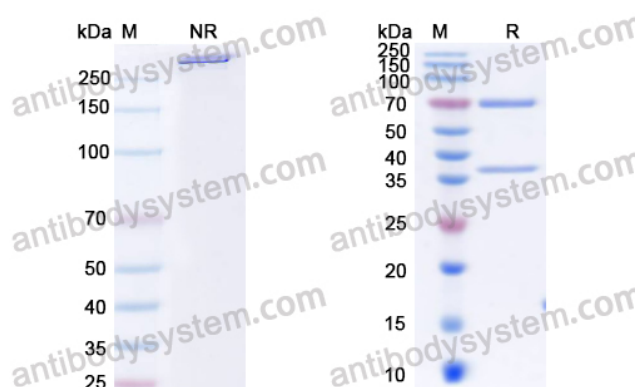
Use a manual defrost freezer and avoid repeated freeze-thaw cycles.

Store at 4°C short term (1-2 weeks). Store at -20°C 12 months. Store at -80°C long term.

## Note

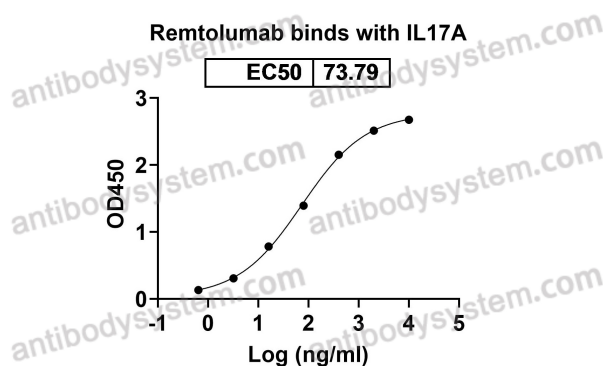
For research use only. Not suitable for clinical or therapeutic use.

## Data Image



SDS PAGE for Remtolumab

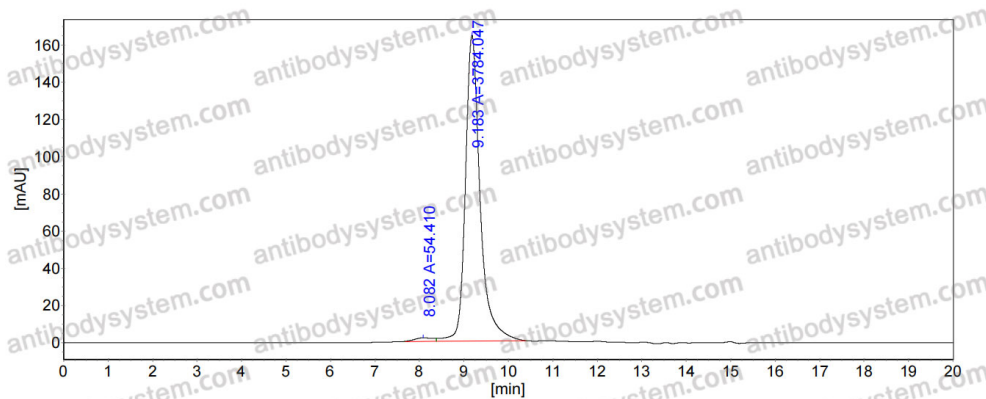
SDS-PAGE



Detects IL17A in indirect ELISAs.

Bioactivity

## Recombinant Proteins &amp; Antibodies



SEC-HPLC

The purity of this product is  
>95% as determined by SEC-  
HPLC.