

Anti-BACE1 Antibody (R1Z53)

Summary

Catalog No.	RMF19601
Clone ID	R1Z53
Host species	Rabbit
Tested applications	IP: 1:20, WB: 1:500-1:1000
Species reactivity	Rat
Form	Liquid
Storage buffer	0.01M PBS, pH 7.4, 0.05% BSA, 50% Glycerol, 0.05% Sodium azide.
Concentration	1 mg/ml
Purity	>95% by SDS-PAGE.
Clonality	Monoclonal
Isotype	IgG
Applications	IP, WB
Target	BACE1, Memapsin-2, KIAA1149, Asp 2, Beta-site amyloid precursor protein cleaving enzyme 1, BACE, Beta-site APP cleaving enzyme 1, Beta-secretase 1, Aspartyl protease 2, ASP2, Membrane-associated aspartic protease 2, BACE1
Purification	Protein A/G purified from cell culture supernatant.
Endotoxin level	Please contact with the lab for this information.
Accession	P56818

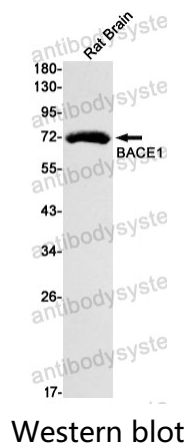
Stability and Storage

Use a manual defrost freezer and avoid repeated freeze thaw cycles. Store at 4 °C for frequent use. Store at -20 °C for twelve months from the date of receipt.

Note

For research use only.

Data Image



Western blot analysis of BACE1 in rat Brain lysates using BACE1 antibody.