

Anti-EIF3B Antibody (R1Z42)

Summary

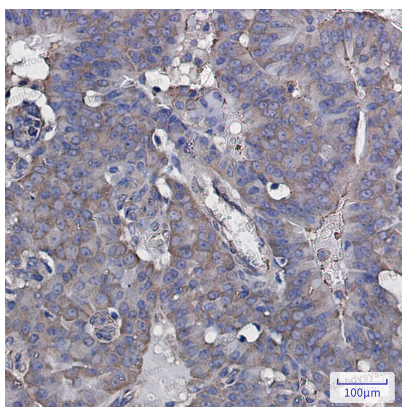
Catalog No.	RHF14403
Clone ID	R1Z42
Host species	Rabbit
Tested applications	IHC: 1:50-1:100, WB: 1:500-1:1000
Species reactivity	Human
Form	Liquid
Storage buffer	0.01M PBS, pH 7.4, 0.05% BSA, 50% Glycerol, 0.05% Sodium azide.
Concentration	1 mg/ml
Purity	>95% by SDS-PAGE.
Clonality	Monoclonal
Isotype	IgG
Applications	IHC, WB
Target	eIF3 p110, Eukaryotic translation initiation factor 3 subunit B, eIF-3-eta, eIF3b, EIF3B, Prt1 homolog, Eukaryotic translation initiation factor 3 subunit 9, EIF3S9, hPrt1, eIF3 p116
Purification	Protein A/G purified from cell culture supernatant.
Endotoxin level	Please contact with the lab for this information.
Accession	P55884

Stability and Storage

Use a manual defrost freezer and avoid repeated freeze thaw cycles. Store at 4 °C for frequent use. Store at -20 °C for twelve months from the date of receipt.

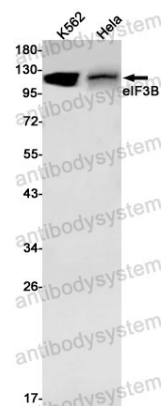
Note

For research use only.

Data Image

Immunohistochemical

Immunohistochemistry analysis of paraffin-embedded Human breast cancer using eIF3B antibody. High-pressure and temperature Sodium Citrate pH 6.0 was used for antigen retrieval.



Western blot

Western blot analysis of eIF3B in K562, HeLa lysates using eIF3B antibody.