

Anti-CCL23/MIP-3/MPIF-1 Antibody (R1Z40)

Summary

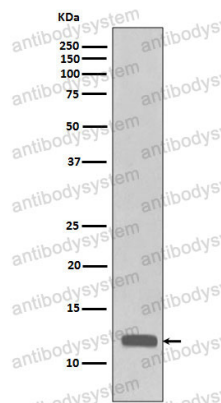
Catalog No.	RHF13401
Clone ID	R1Z40
Host species	Rabbit
Tested applications	IHC: 1:100-1:200, WB: 1:1000-1:2000
Species reactivity	Human
Form	Liquid
Storage buffer	0.01M PBS, pH 7.4, 0.05% BSA, 50% Glycerol, 0.05% Sodium azide.
Concentration	1 mg/ml
Purity	>95% by SDS-PAGE.
Clonality	Monoclonal
Isotype	IgG
Applications	IHC, WB
Target	CKB-8, MIP3, CCL23, C-C motif chemokine 23, MPIF1, MIP-3, Macrophage inflammatory protein 3, SCYA23, Small-inducible cytokine A23, Myeloid progenitor inhibitory factor 1, CK-beta-8, MPIF-1
Purification	Protein A/G purified from cell culture supernatant.
Endotoxin level	Please contact with the lab for this information.
Accession	P55773

Stability and Storage

Use a manual defrost freezer and avoid repeated freeze thaw cycles. Store at 4 °C for frequent use. Store at -20 °C for twelve months from the date of receipt.

Note

For research use only.

Data Image

Western blot

Western blot analysis of CCL23 / MIP3 expression in recombinant protein cell lysate.