

Anti-VCP Antibody (R1Z15)

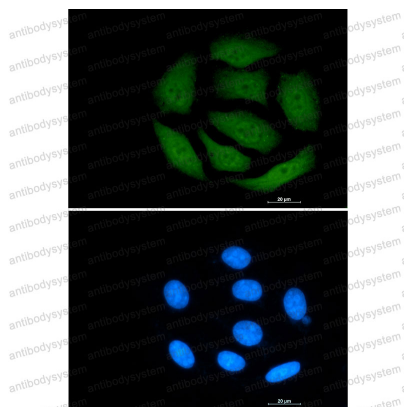
Summary

Catalog No.	RHF08801
Clone ID	R1Z15
Host species	Rabbit
Tested applications	IF: 1:50-1:200, IHC: 1:50-1:100, IP: 1:20, WB: 1:500-1:1000
Species reactivity	Human, Mouse, Rat
Form	Liquid
Storage buffer	0.01M PBS, pH 7.4, 0.05% BSA, 50% Glycerol, 0.05% Sodium azide.
Concentration	1 mg/ml
Purity	>95% by SDS-PAGE.
Clonality	Monoclonal
Isotype	IgG
Applications	IF, IHC, IP, WB
Target	Transitional endoplasmic reticulum ATPase, Valosin-containing protein, 15S Mg(2+)-ATPase p97 subunit, TER ATPase, VCP
Purification	Protein A/G purified from cell culture supernatant.
Endotoxin level	Please contact with the lab for this information.
Accession	P55072
Stability and Storage	Use a manual defrost freezer and avoid repeated freeze thaw cycles. Store at 4 °C for frequent use. Store at -20 °C for twelve months from the date of receipt.

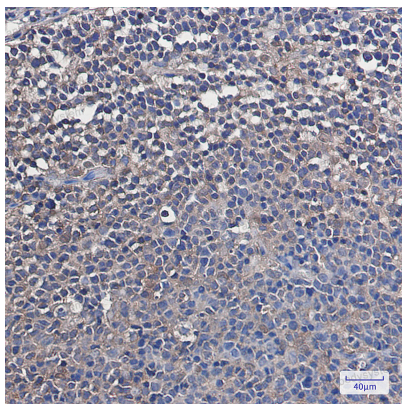
Note

For research use only.

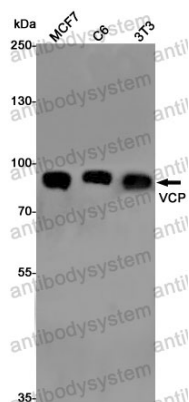
Data Image

**Immunofluorescence**

Immunocytochemistry analysis of VCP (green) in A549 using VCP antibody, and DAPI (blue).

**Immunohistochemical**

Immunohistochemistry analysis of paraffin-embedded Human tonsil using VCP antibody. High-pressure and temperature Sodium Citrate pH 6.0 was used for antigen retrieval.



Western blot

Western blot analysis of VCP in MCF-7, C6, 3T3 lysates using VCP antibody.