

Anti-POLG Antibody (R1Y83)

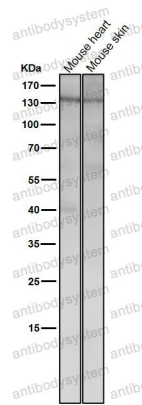
Summary

Catalog No.	RHF01602
Clone ID	R1Y83
Host species	Rabbit
Tested applications	WB: 1:1000-1:2000
Species reactivity	Human, Mouse, Rat
Form	Liquid
Storage buffer	0.01M PBS, pH 7.4, 0.05% BSA, 50% Glycerol, 0.05% Sodium azide.
Concentration	1 mg/ml
Purity	>95% by SDS-PAGE.
Clonality	Monoclonal
Isotype	IgG
Applications	WB
Target	POLG, Mitochondrial DNA polymerase catalytic subunit, POLGA, PolG-alpha, POLG1, DNA polymerase subunit gamma-1, MDP1
Purification	Protein A/G purified from cell culture supernatant.
Endotoxin level	Please contact with the lab for this information.
Accession	P54098
Stability and Storage	Use a manual defrost freezer and avoid repeated freeze thaw cycles. Store at 4 °C for frequent use. Store at -20 °C for twelve months from the date of receipt.

Note

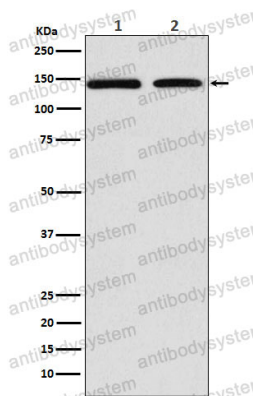
For research use only.

Data Image



Western blot

All lanes use the Antibody at 1:1K dilution for 1 hour at room temperature.



Western blot

Western blot analysis of DNA Polymerase gamma expression in (1) MCF7 cell lysate; (2) RAW264.7 cell lysate.