

Anti-AP2S1 Antibody (R1Y79)

Summary

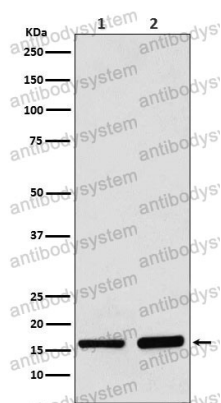
Catalog No.	RHE99901
Clone ID	R1Y79
Host species	Rabbit
Tested applications	IHC: 1:100-1:200, IP: 1:20-1:50, WB: 1:1000-1:2000
Species reactivity	Human, Mouse, Rat
Form	Liquid
Storage buffer	0.01M PBS, pH 7.4, 0.05% BSA, 50% Glycerol, 0.05% Sodium azide.
Concentration	1 mg/ml
Purity	>95% by SDS-PAGE.
Clonality	Monoclonal
Isotype	IgG
Applications	IHC, IP, WB
Target	Adaptor-related protein complex 2 subunit sigma, Clathrin assembly protein 2 sigma small chain, HA2 17 kDa subunit, AP2S1, Clathrin coat-associated protein AP17, Clathrin coat assembly protein AP17, AP-2 complex subunit sigma, Adaptor protein complex AP-2 subunit sigma, CLAPS2, AP17, Sigma2-adaptin, Plasma membrane adaptor AP-2 17 kDa protein
Purification	Protein A/G purified from cell culture supernatant.
Endotoxin level	Please contact with the lab for this information.
Accession	P53680

Stability and Storage

Use a manual defrost freezer and avoid repeated freeze thaw cycles. Store at 4 °C for frequent use. Store at -20 °C for twelve months from the date of receipt.

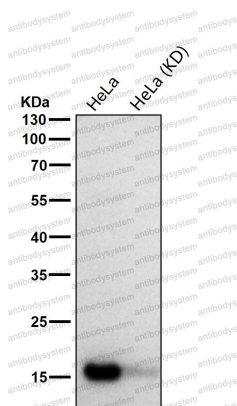
Note

For research use only.

Data Image

Western blot

Western blot analysis of AP2S1 expression in (1) 293 cell lysate; (2) Mouse brain lysate.



Western blot

All lanes use the Antibody at 1:1K dilution for 1 hour at room temperature.