

Anti-AP2S1 Antibody (R1Y78)

Summary

Catalog No.	RHE99902
Clone ID	R1Y78
Host species	Rabbit
Tested applications	FCM: 1:20-1:100, IP: 1:20-1:50, WB: 1:1000-1:2000
Species reactivity	Human, Mouse, Rat
Form	Liquid
Storage buffer	0.01M PBS, pH 7.4, 0.05% BSA, 50% Glycerol, 0.05% Sodium azide.
Concentration	1 mg/ml
Purity	>95% by SDS-PAGE.
Clonality	Monoclonal
Isotype	IgG
Applications	FCM, IP, WB
Target	Adaptor-related protein complex 2 subunit sigma, Clathrin assembly protein 2 sigma small chain, HA2 17 kDa subunit, AP2S1, Clathrin coat-associated protein AP17, Clathrin coat assembly protein AP17, AP-2 complex subunit sigma, Adaptor protein complex AP-2 subunit sigma, CLAPS2, AP17, Sigma2-adaptin, Plasma membrane adaptor AP-2 17 kDa protein
Purification	Protein A/G purified from cell culture supernatant.
Endotoxin level	Please contact with the lab for this information.
Accession	P53680

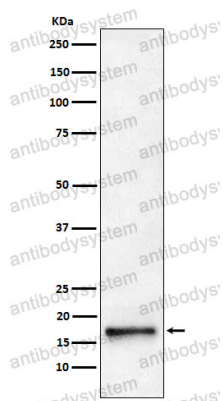
Stability and Storage

Use a manual defrost freezer and avoid repeated freeze thaw cycles. Store at 4 °C for frequent use. Store at -20 °C for twelve months from the date of receipt.

Note

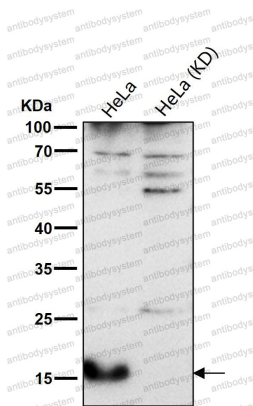
For research use only.

Data Image



Western blot

Western blot analysis of AP2S1 expression in HeLa cell lysate.



Western blot

All lanes use the Antibody at 1:1K dilution for 1 hour at room temperature.