

Anti-Phospho-ACLY (Thr447/Ser451) Antibody (R1Y73)

Summary

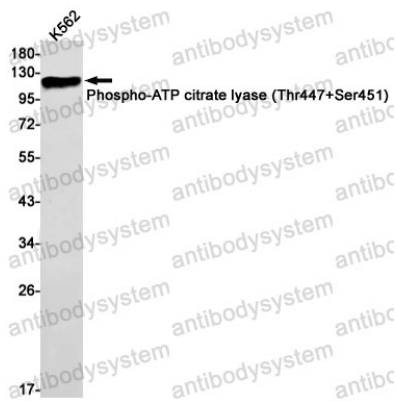
Catalog No.	RHE98002
Clone ID	R1Y73
Host species	Rabbit
Tested applications	WB: 1:500-1:1000
Species reactivity	Human
Form	Liquid
Storage buffer	0.01M PBS, pH 7.4, 0.05% BSA, 50% Glycerol, 0.05% Sodium azide.
Concentration	1 mg/ml
Purity	>95% by SDS-PAGE.
Clonality	Monoclonal
Isotype	IgG
Applications	WB
Target	Citrate cleavage enzyme, ACLY, ATP-citrate synthase, ATP-citrate (pro-S)-lyase, ACL
Purification	Protein A/G purified from cell culture supernatant.
Endotoxin level	Please contact with the lab for this information.
Accession	P53396

Stability and Storage

Use a manual defrost freezer and avoid repeated freeze thaw cycles. Store at 4 °C for frequent use. Store at -20 °C for twelve months from the date of receipt.

Note

For research use only.

Data Image

Western blot

Western blot analysis of Phospho-ATP citrate lyase (Thr447+Ser451) in K562 lysates using Phospho-ATP Citrate Synthase (Thr447/Ser451) antibody.